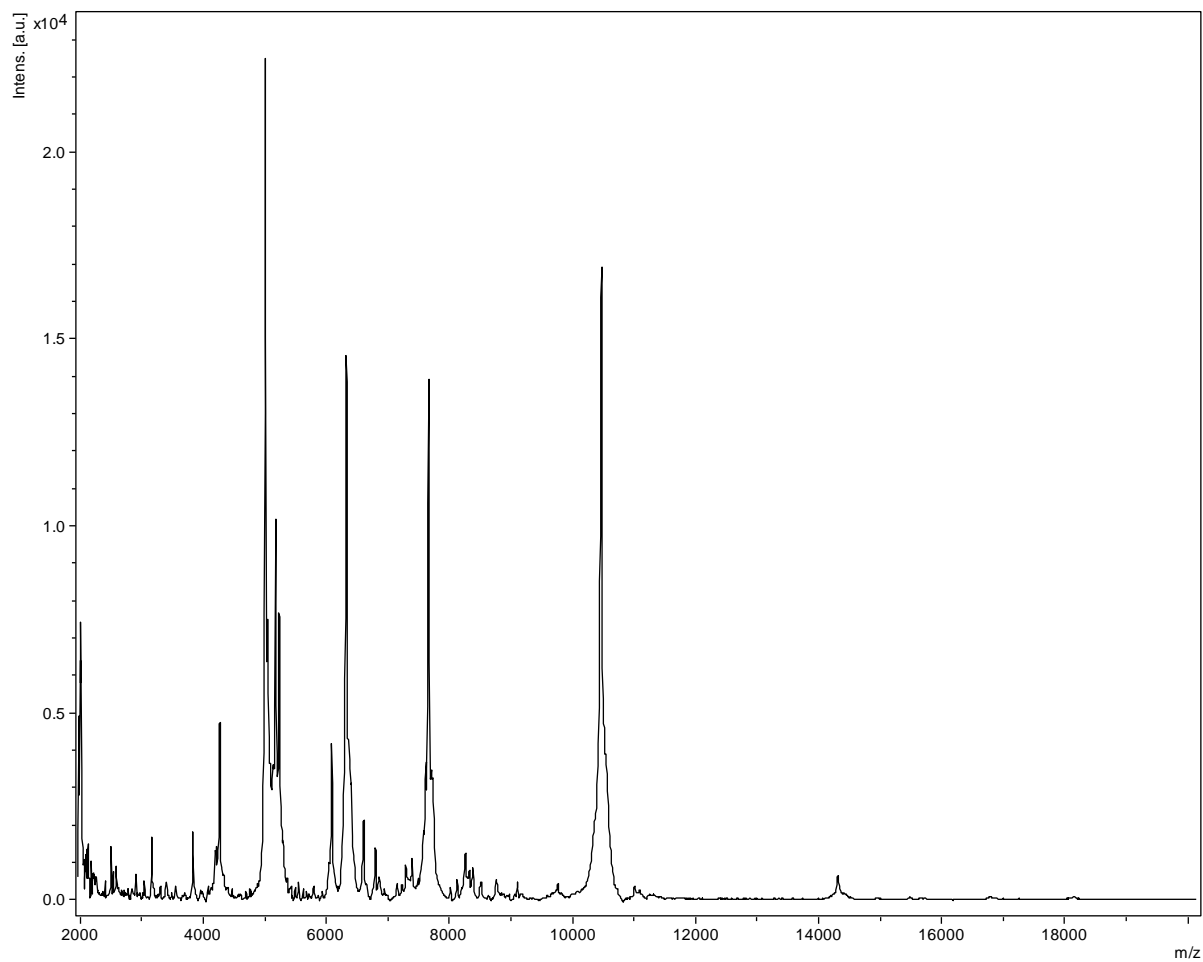
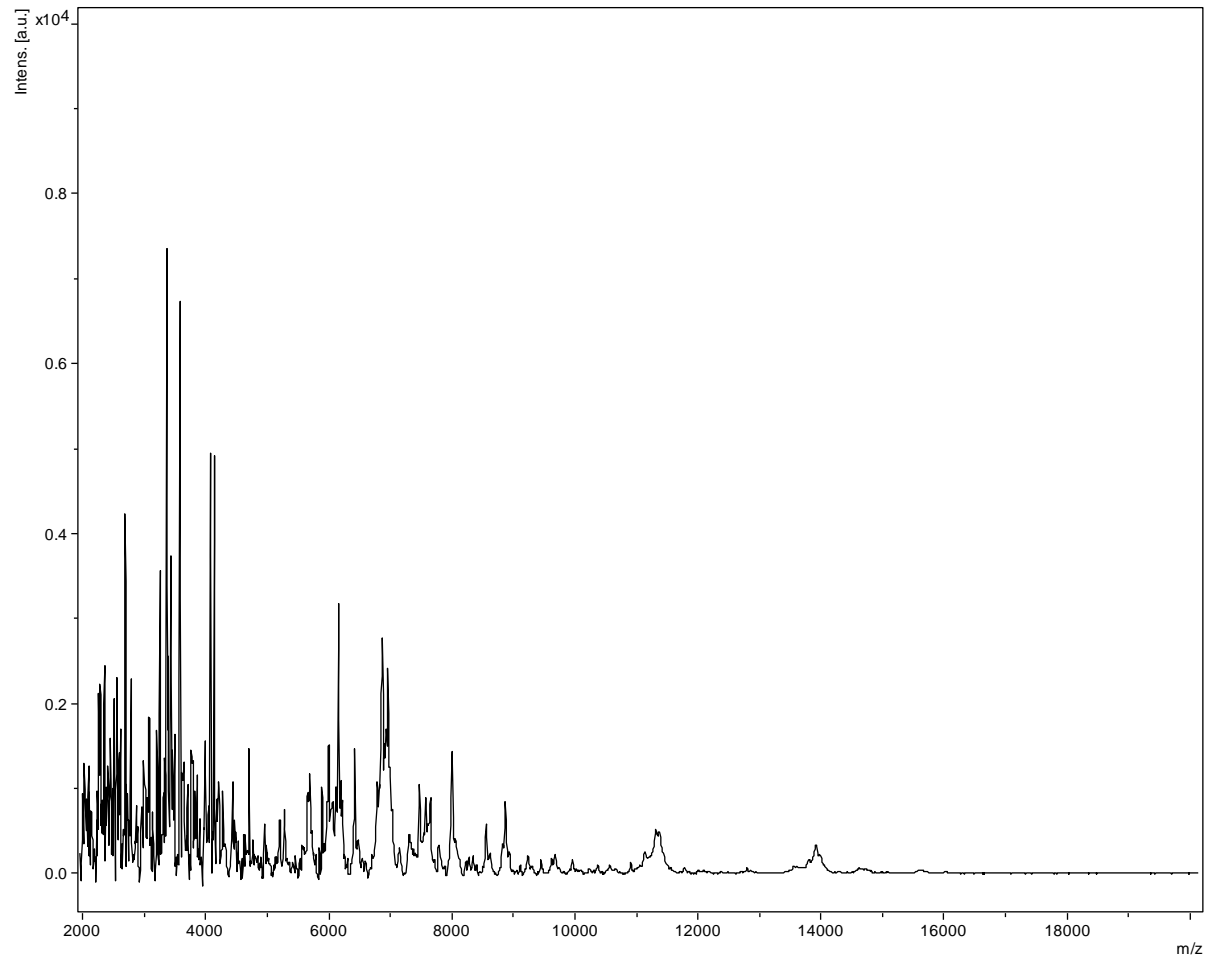


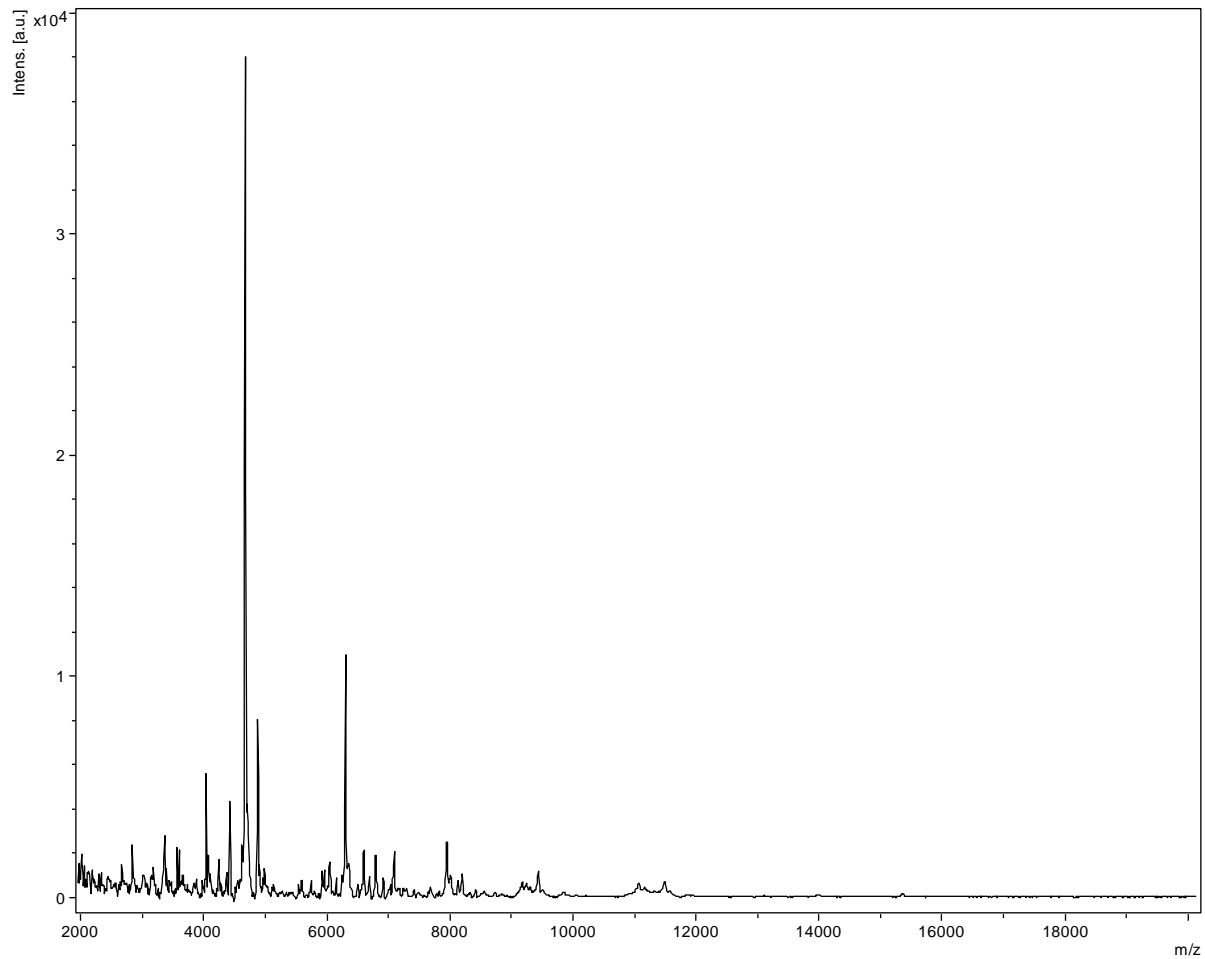
Acinetobacter Iwoffii



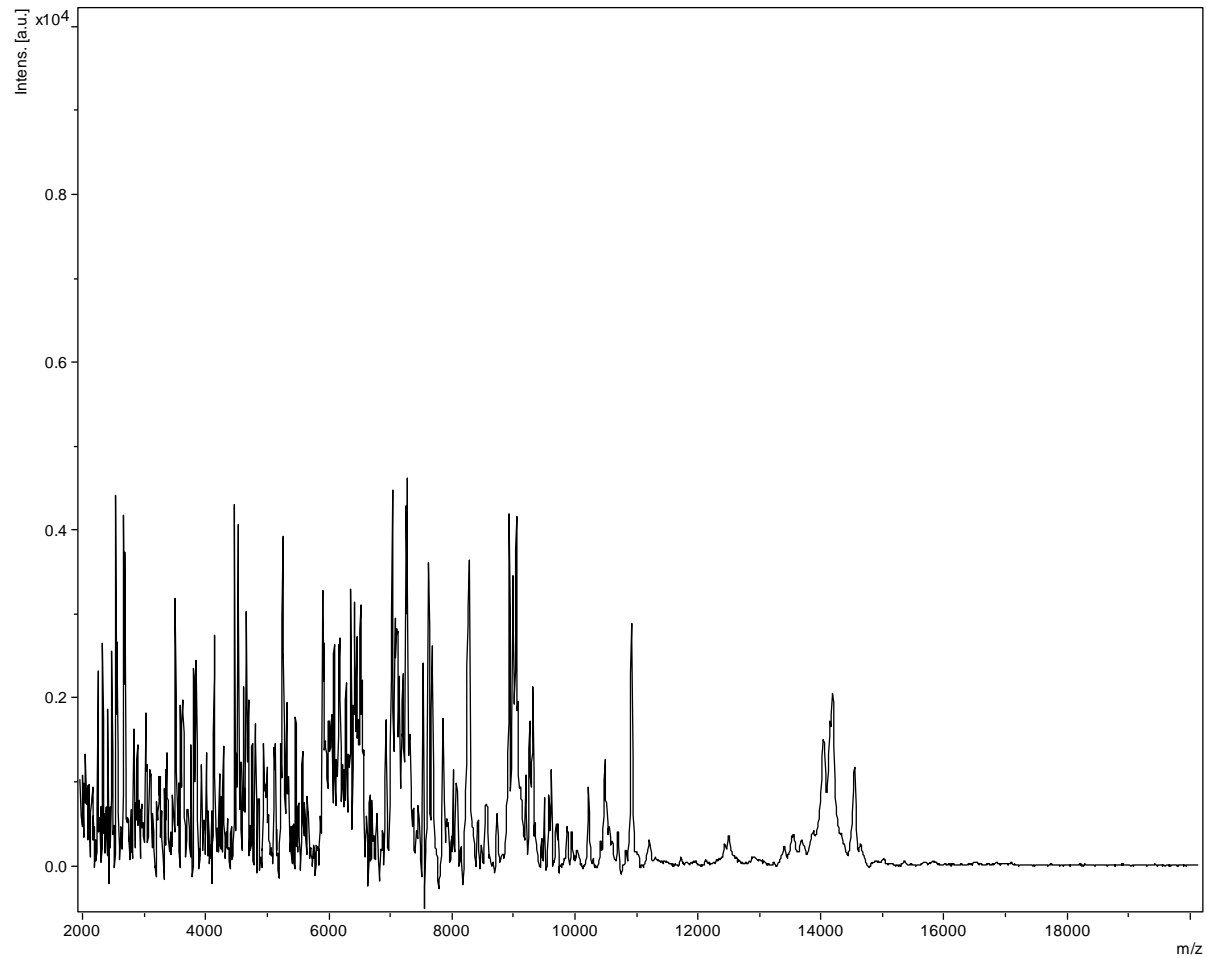
Arxula adenivorans



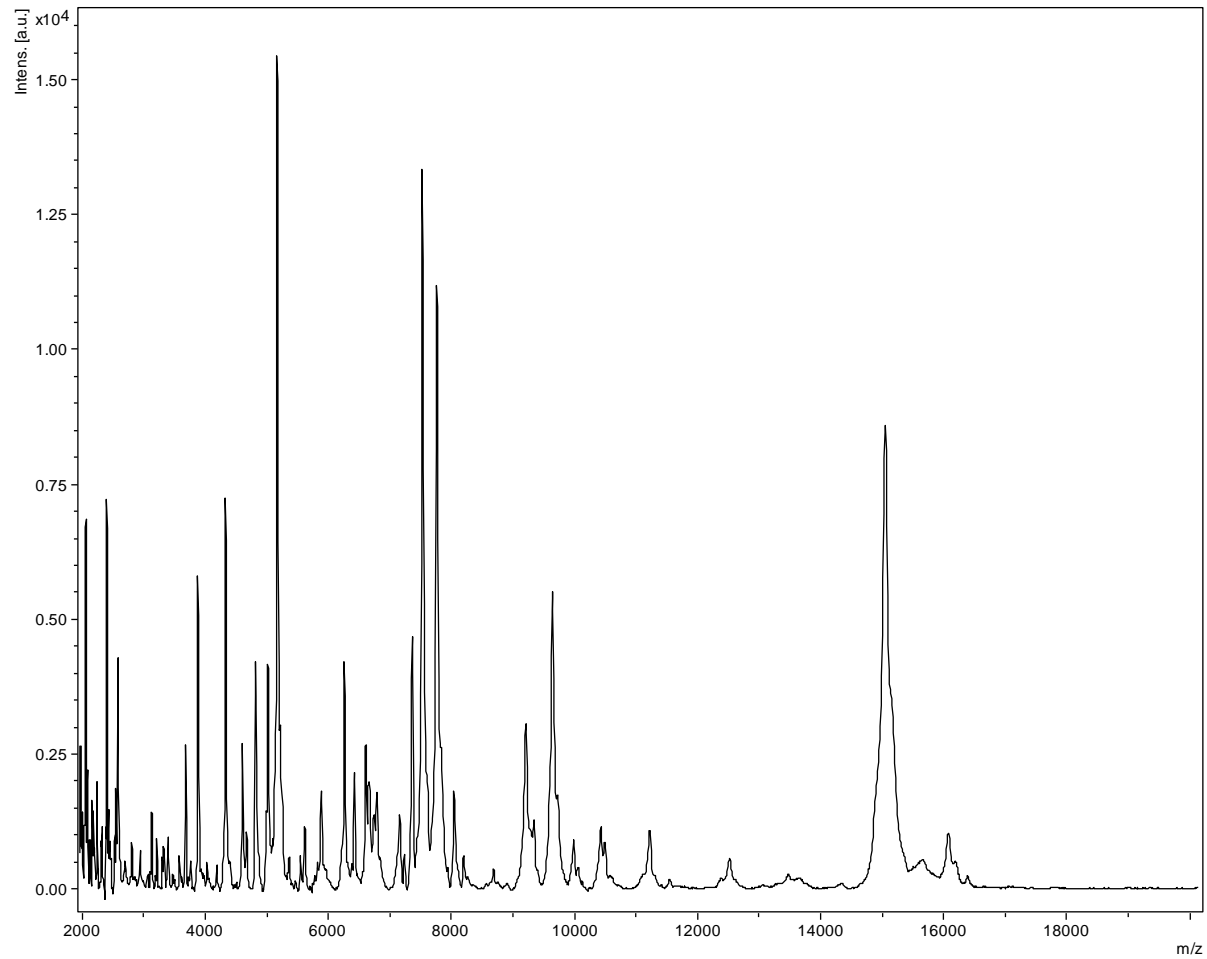
Aspergillus flavus



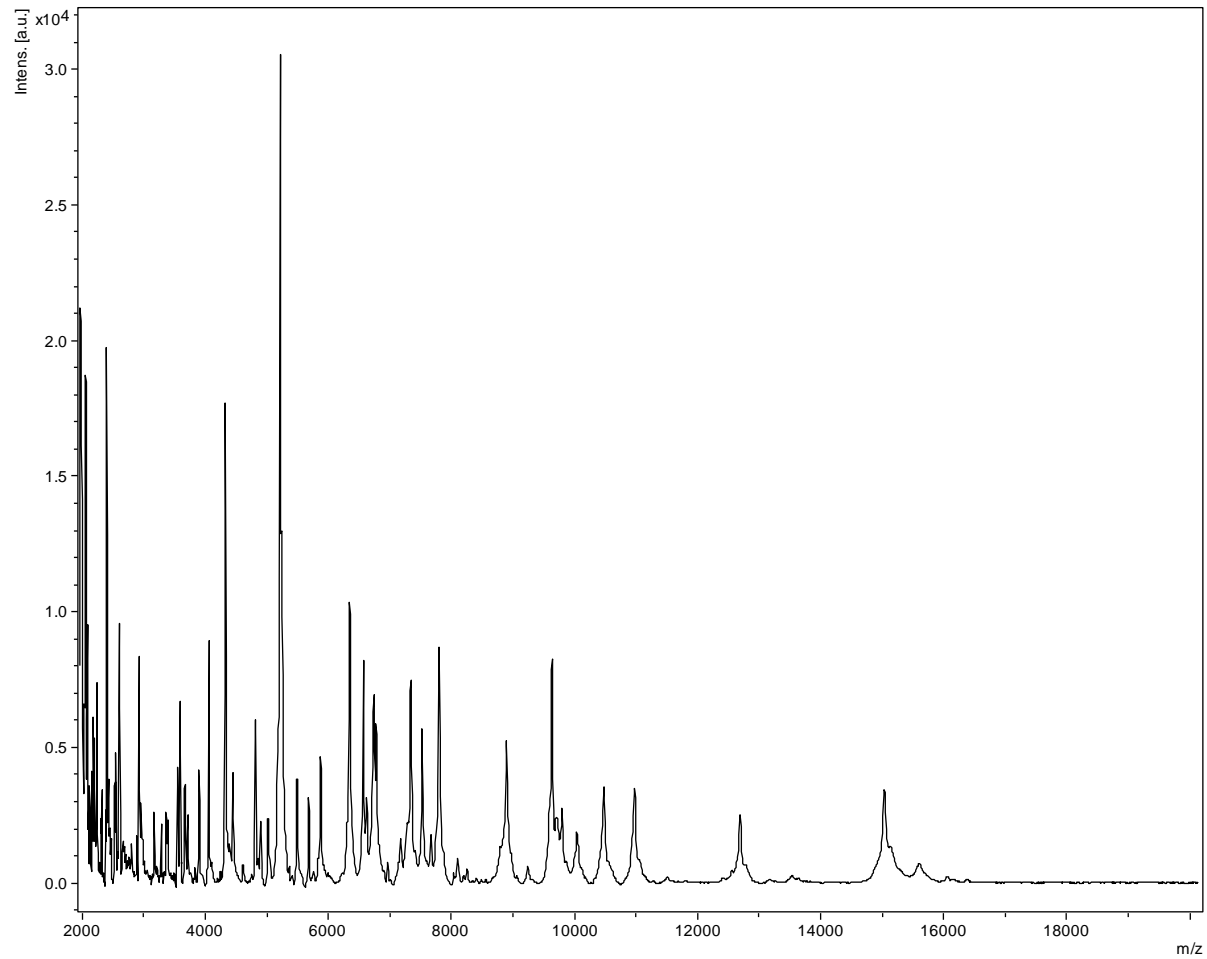
Aspergillus niger



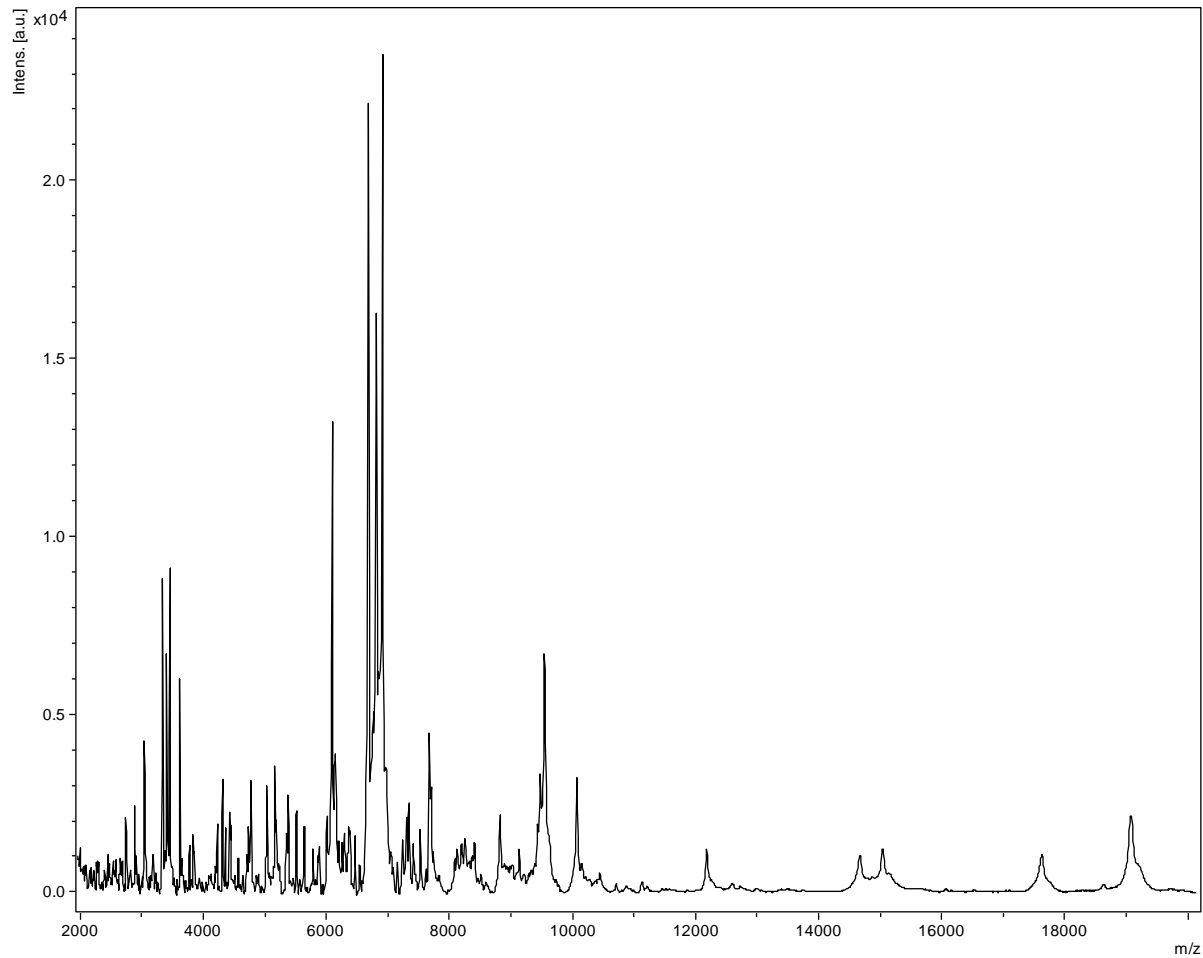
Bacillus cereus



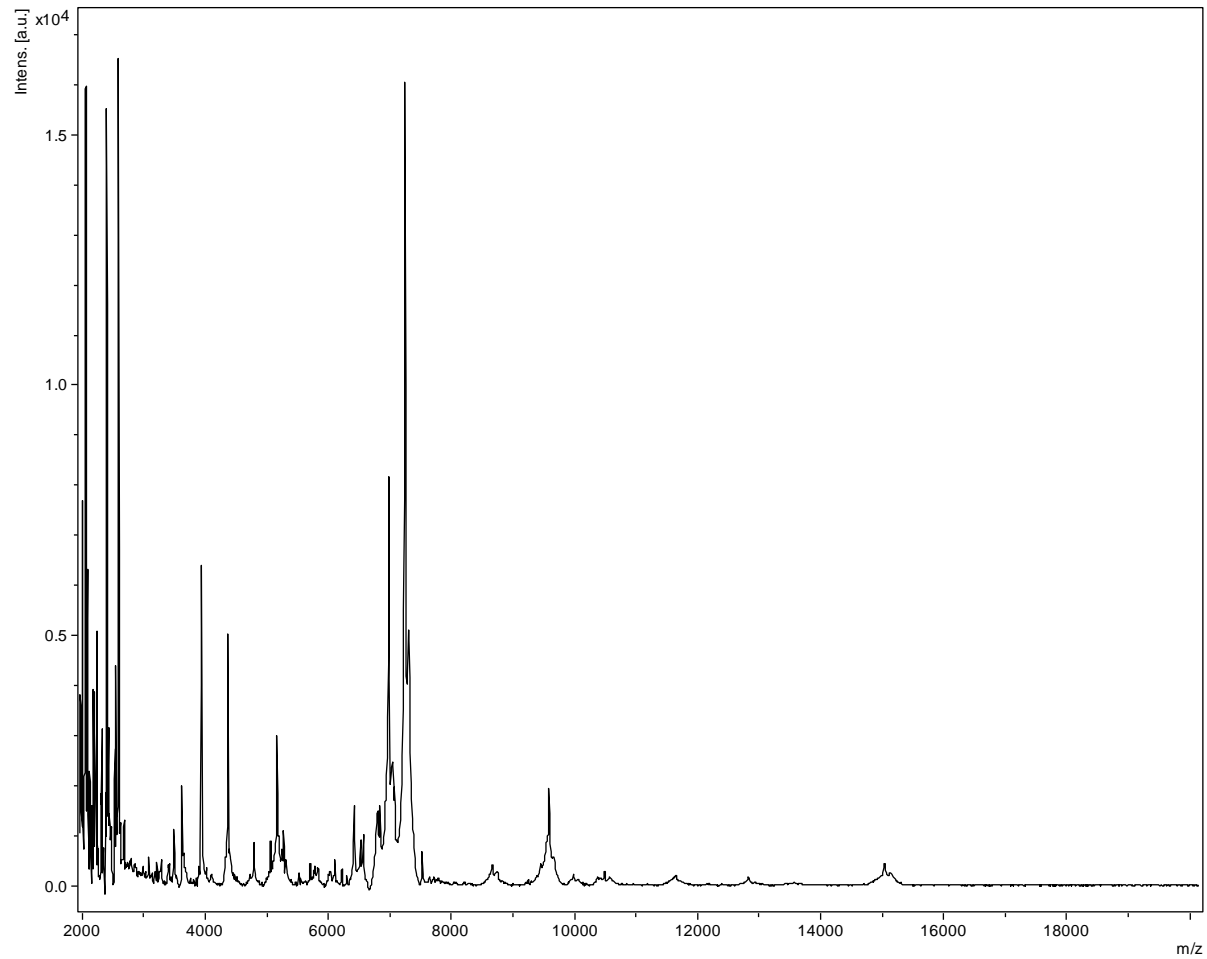
Bacillus dielmoensis



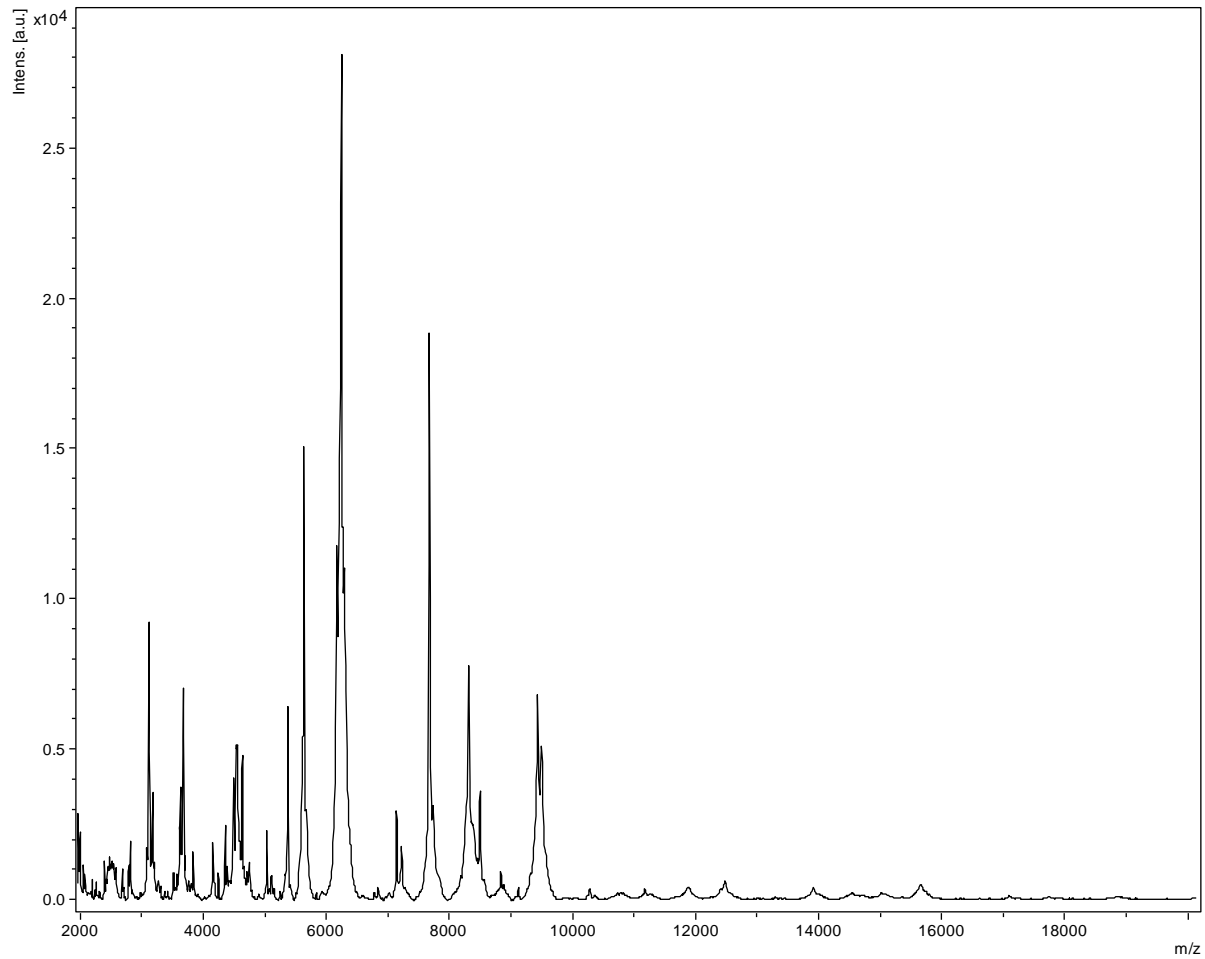
Clostridium subterminale



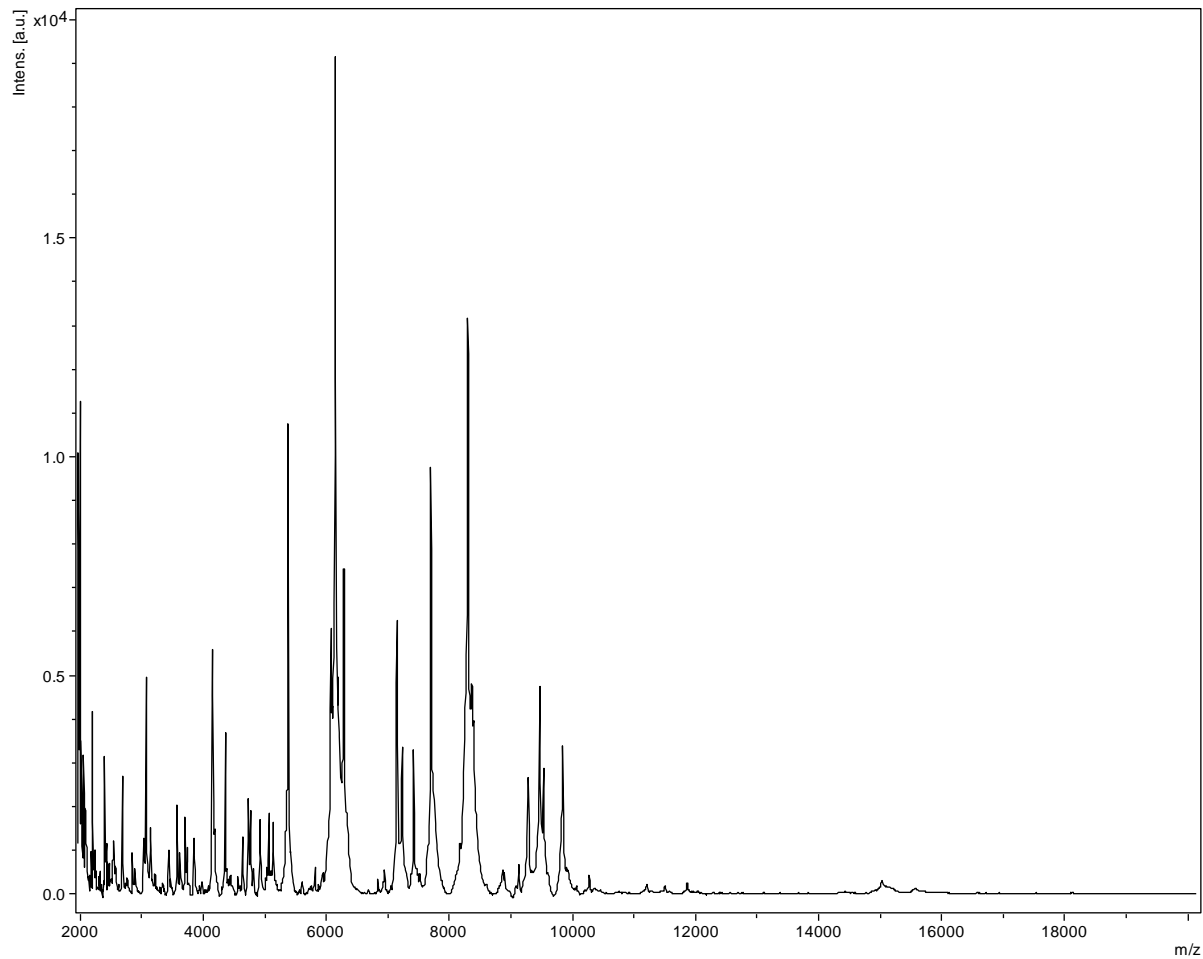
Cutibacterium acnes



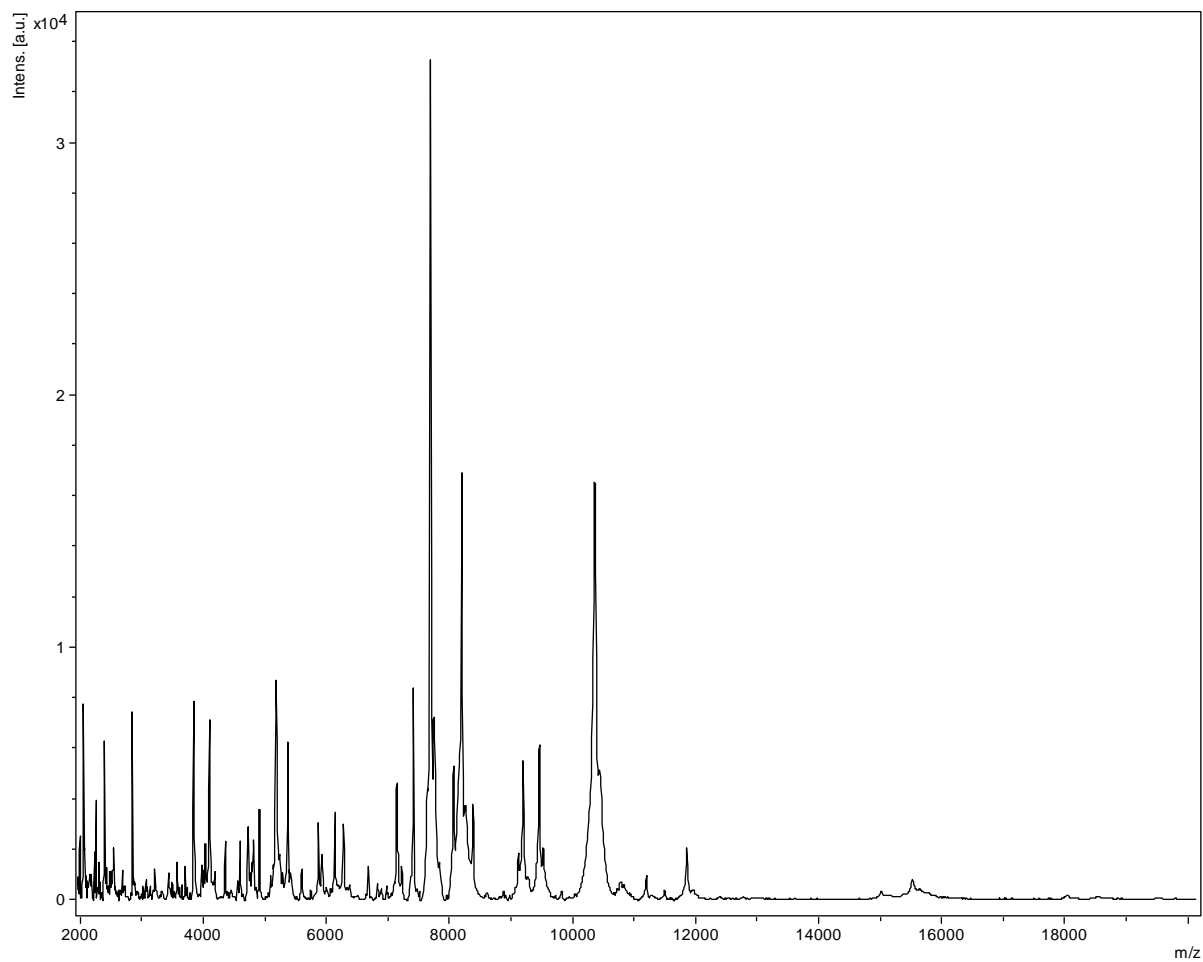
Enterobacter cloacae



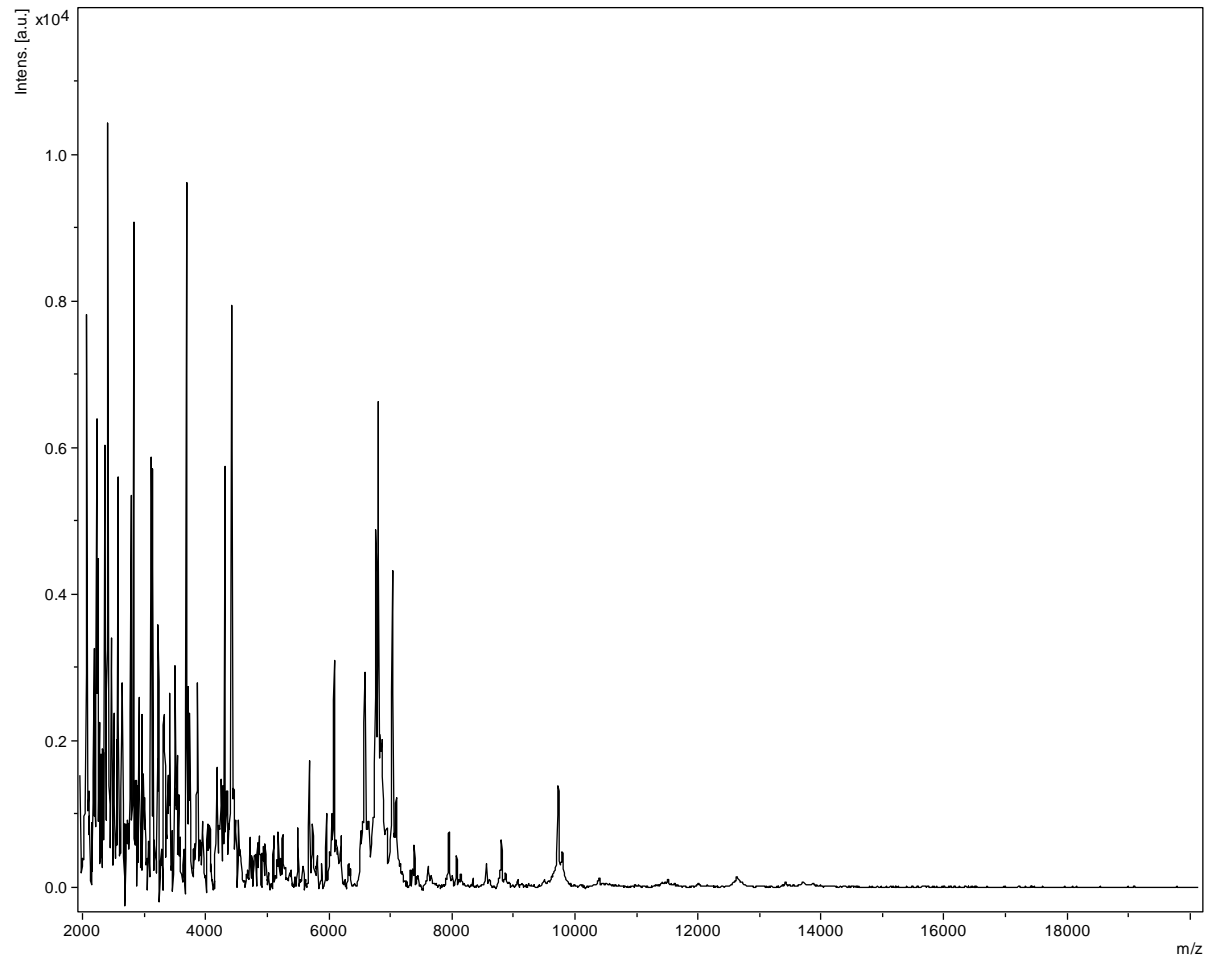
Klebsiella pneumoniae



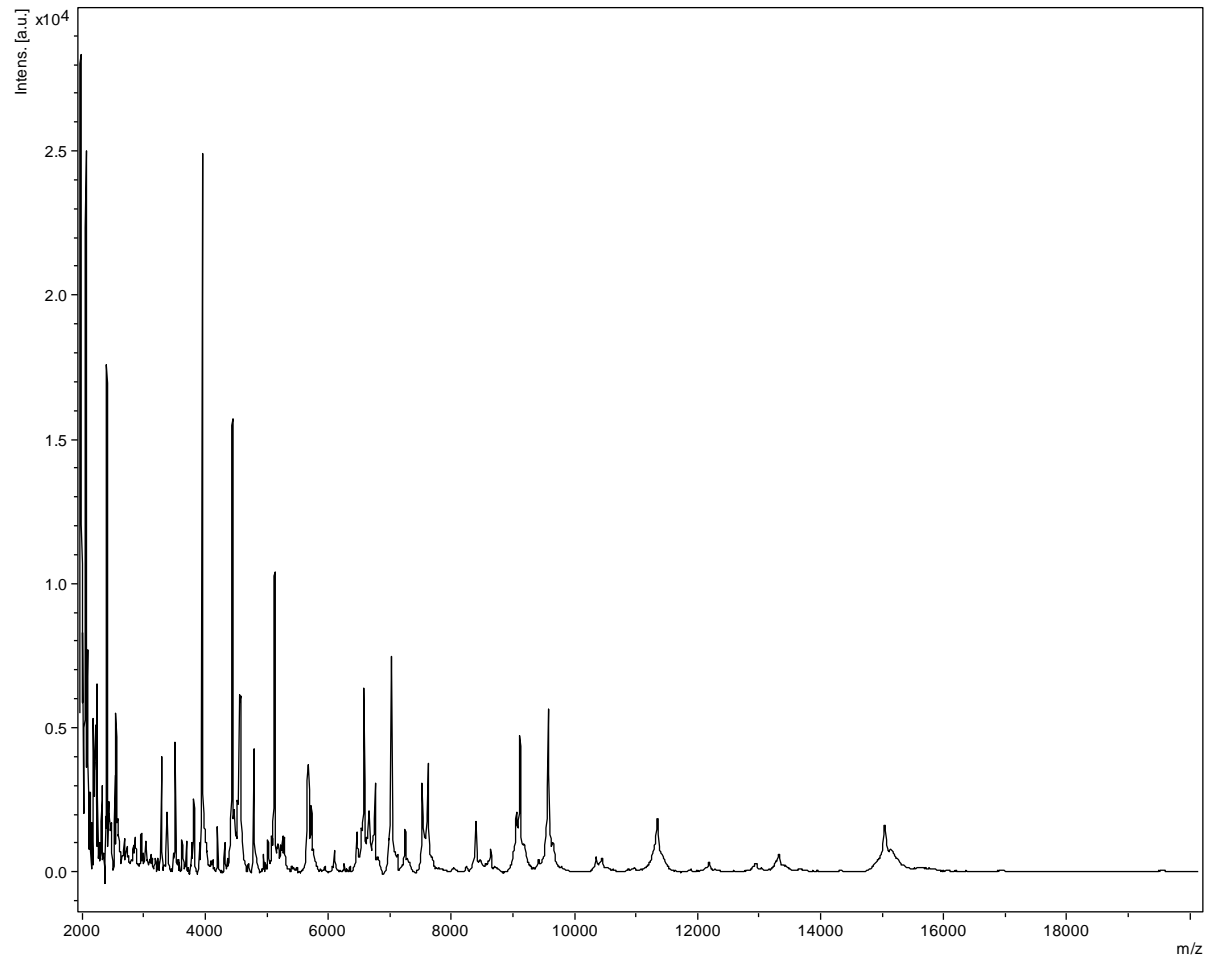
Klebsiella variicola



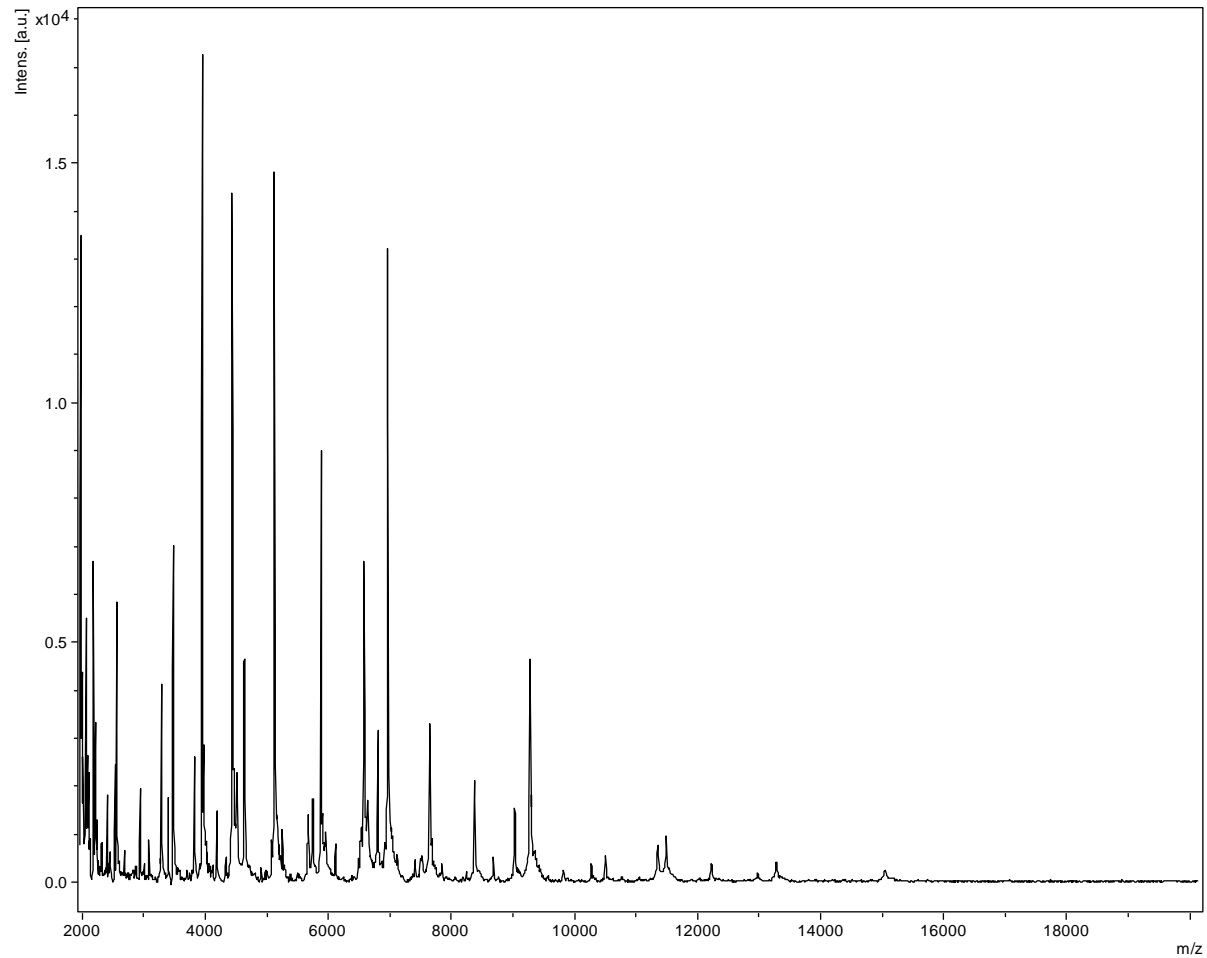
Lodderomyces elongisporus



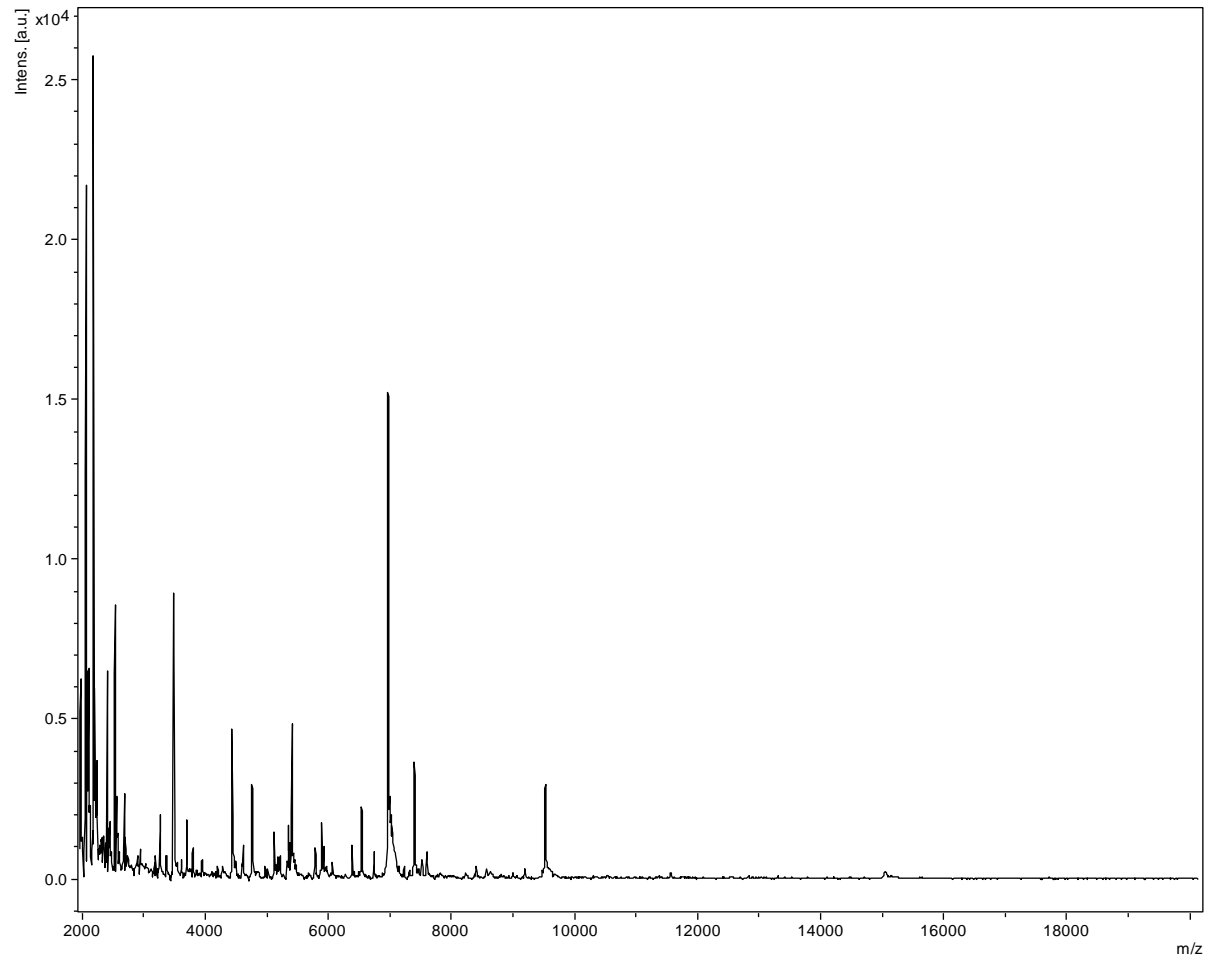
Microbacterium neimengense



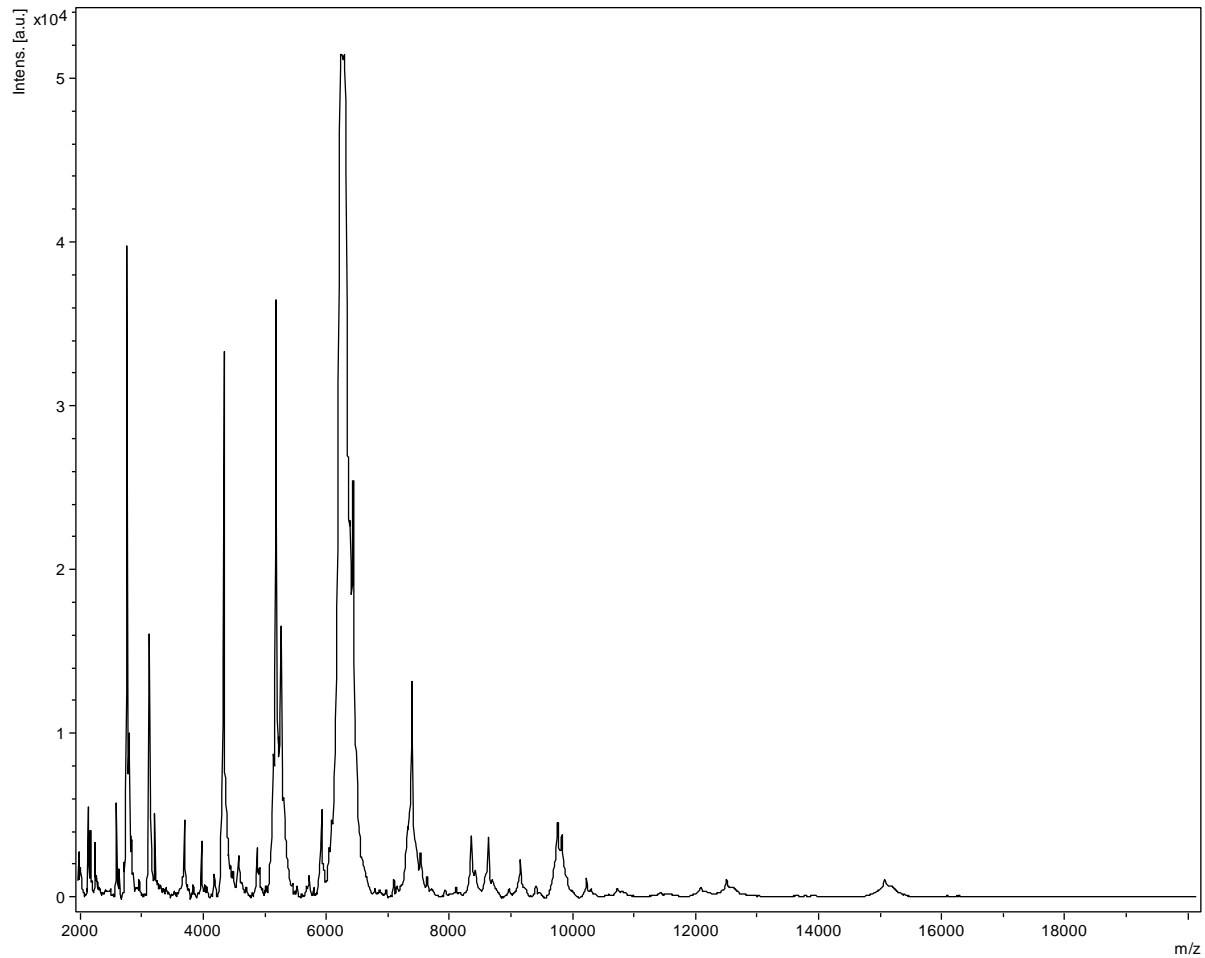
Microbacterium oleivorans



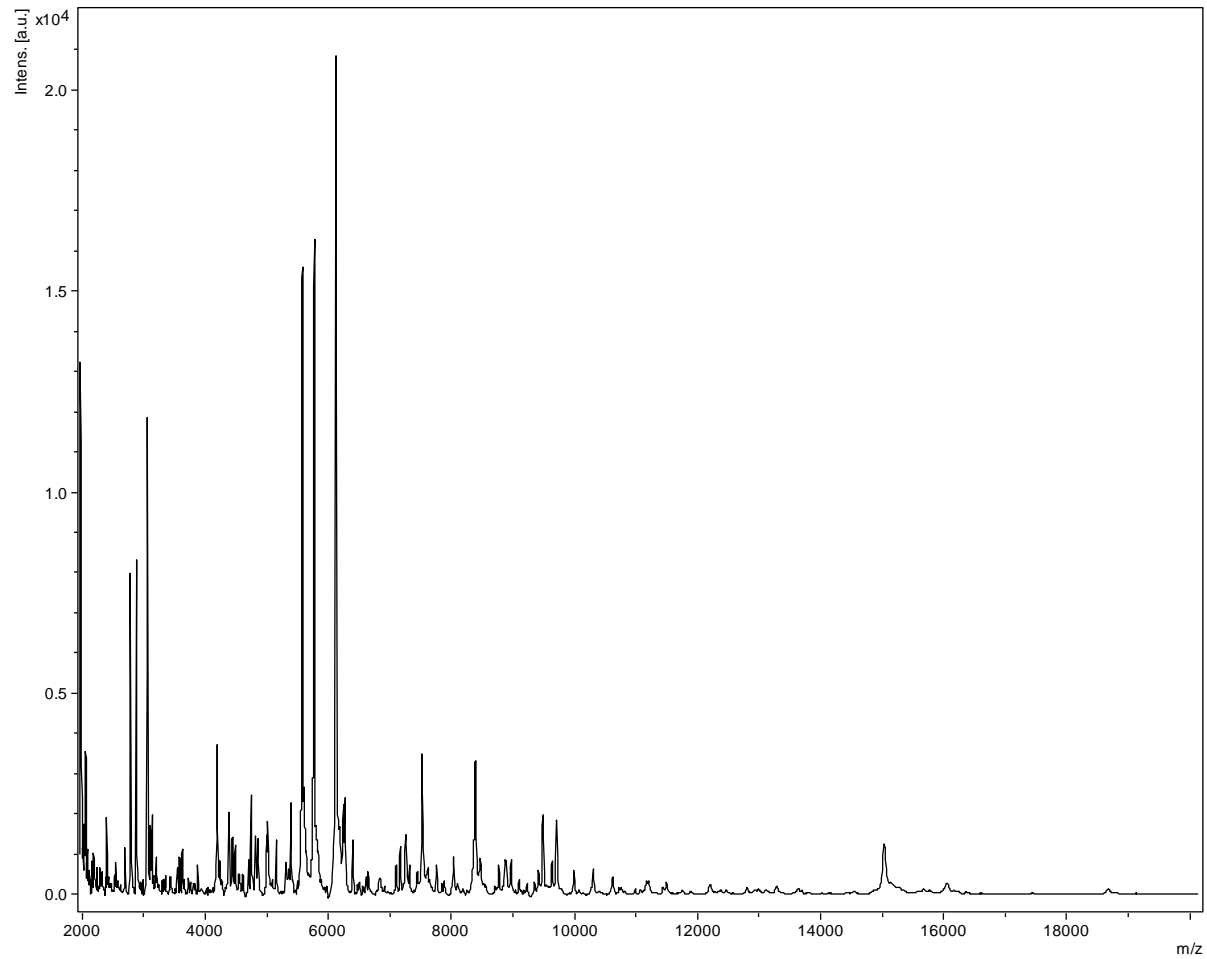
Microbacterium paraoxydans



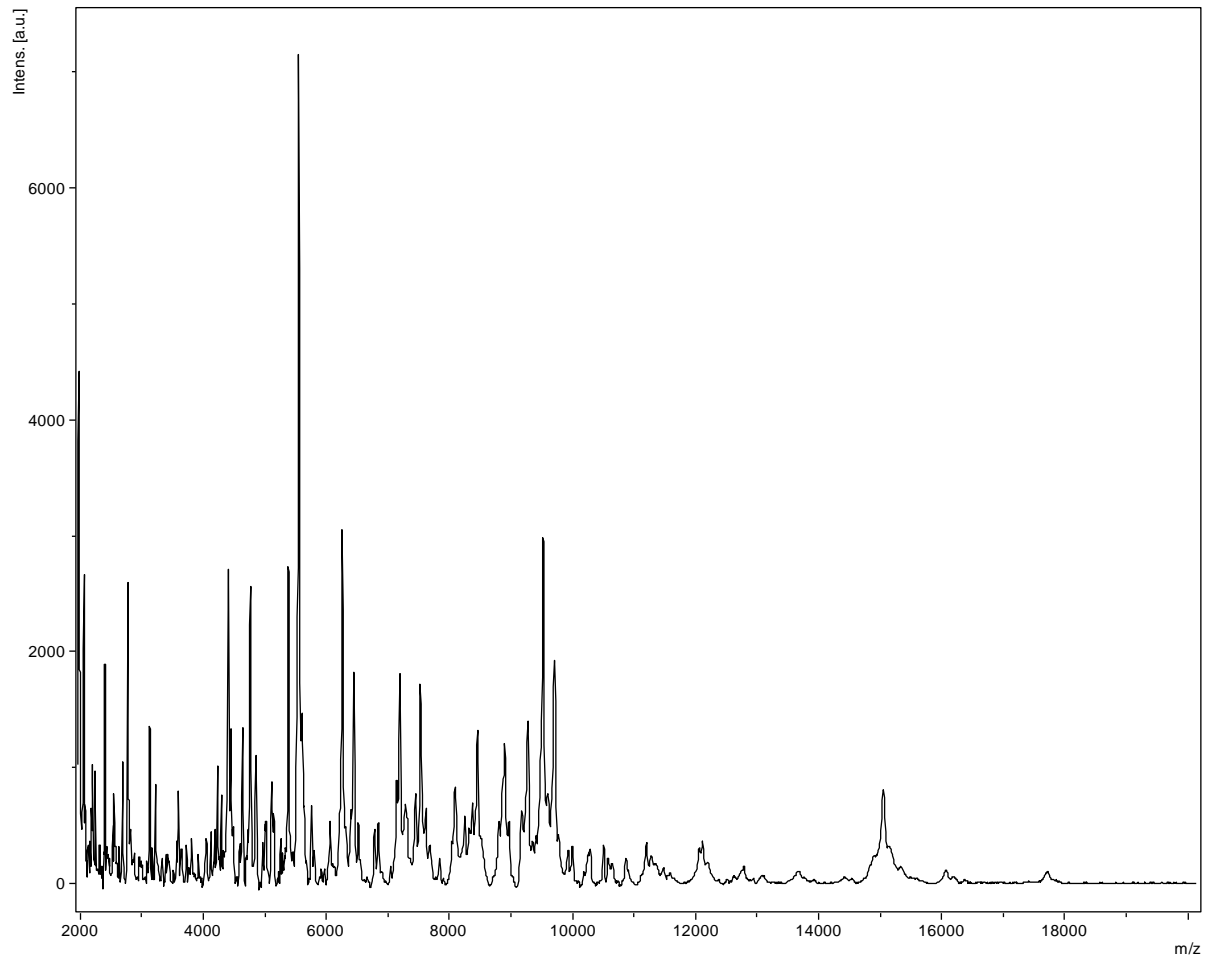
Micrococcus luteus



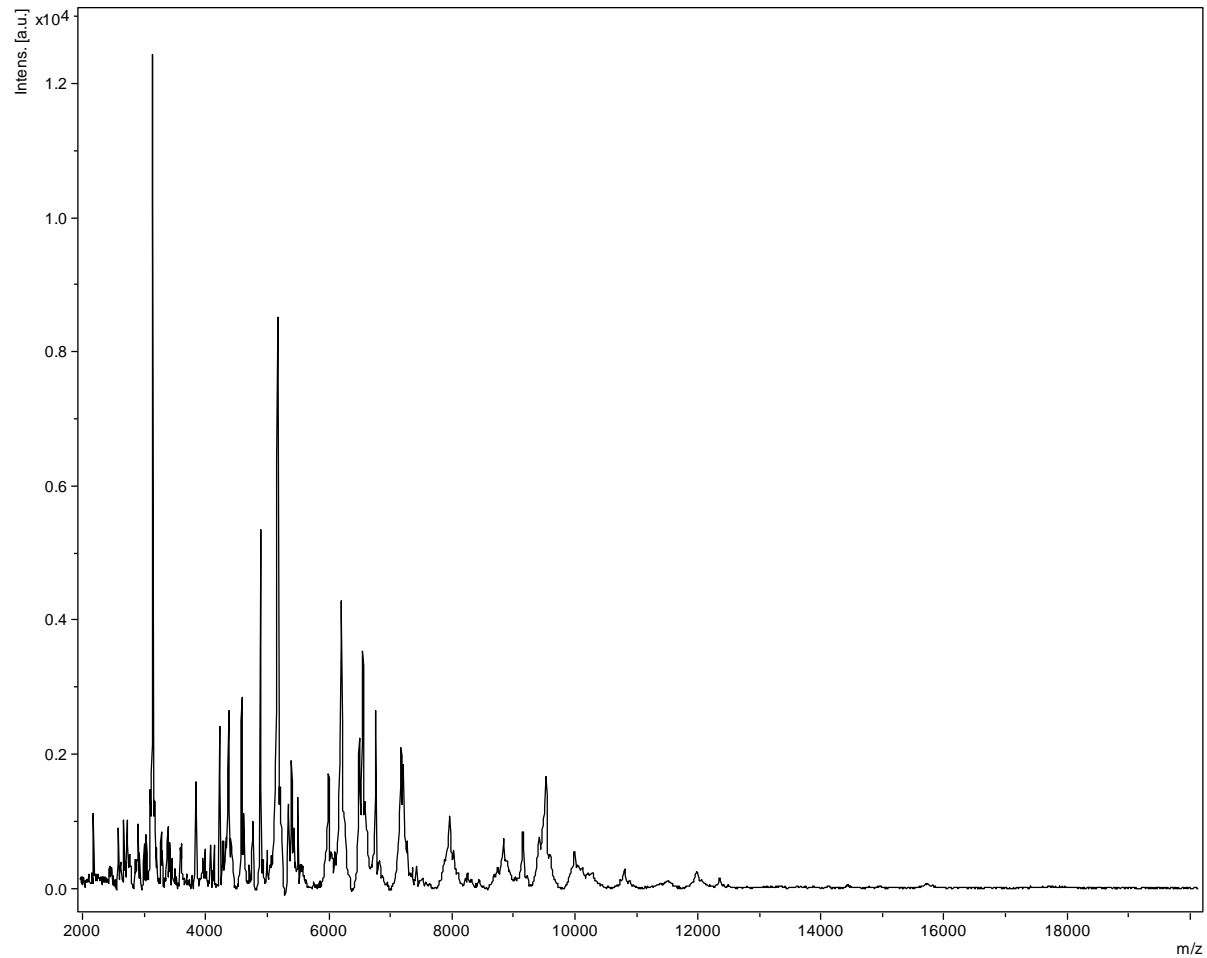
Pantoea calida



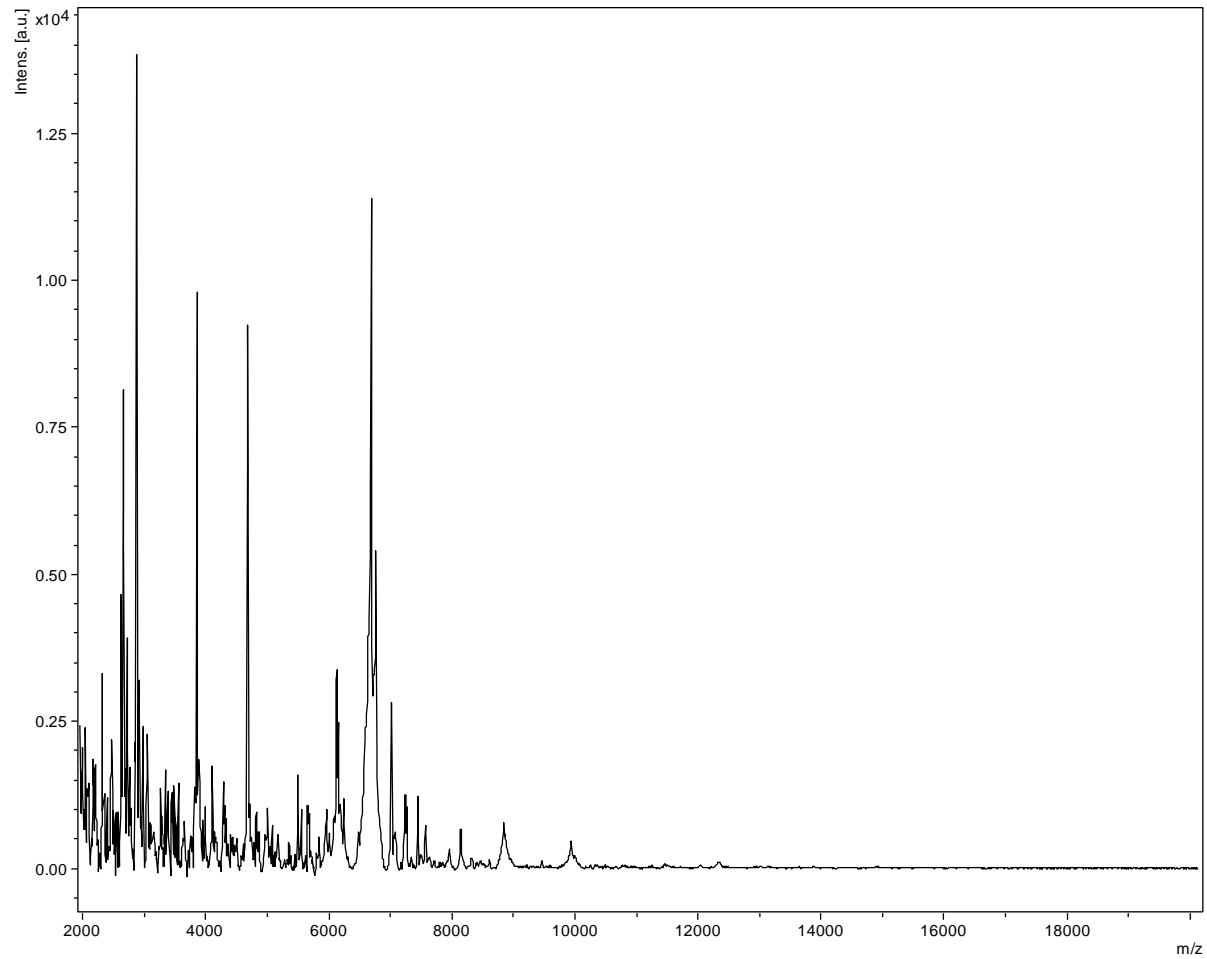
Pantoea dispersa



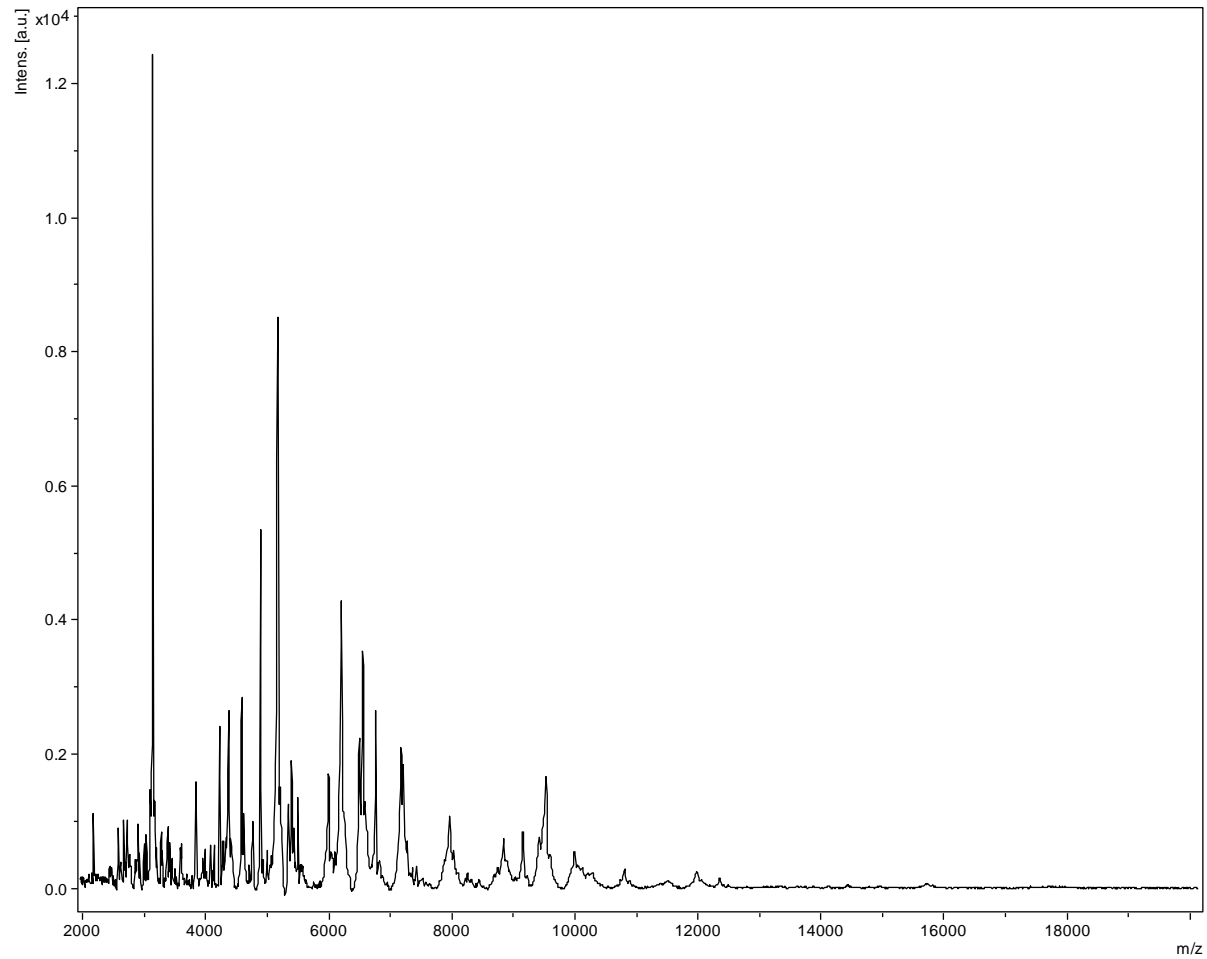
Penicillium chrysogenum



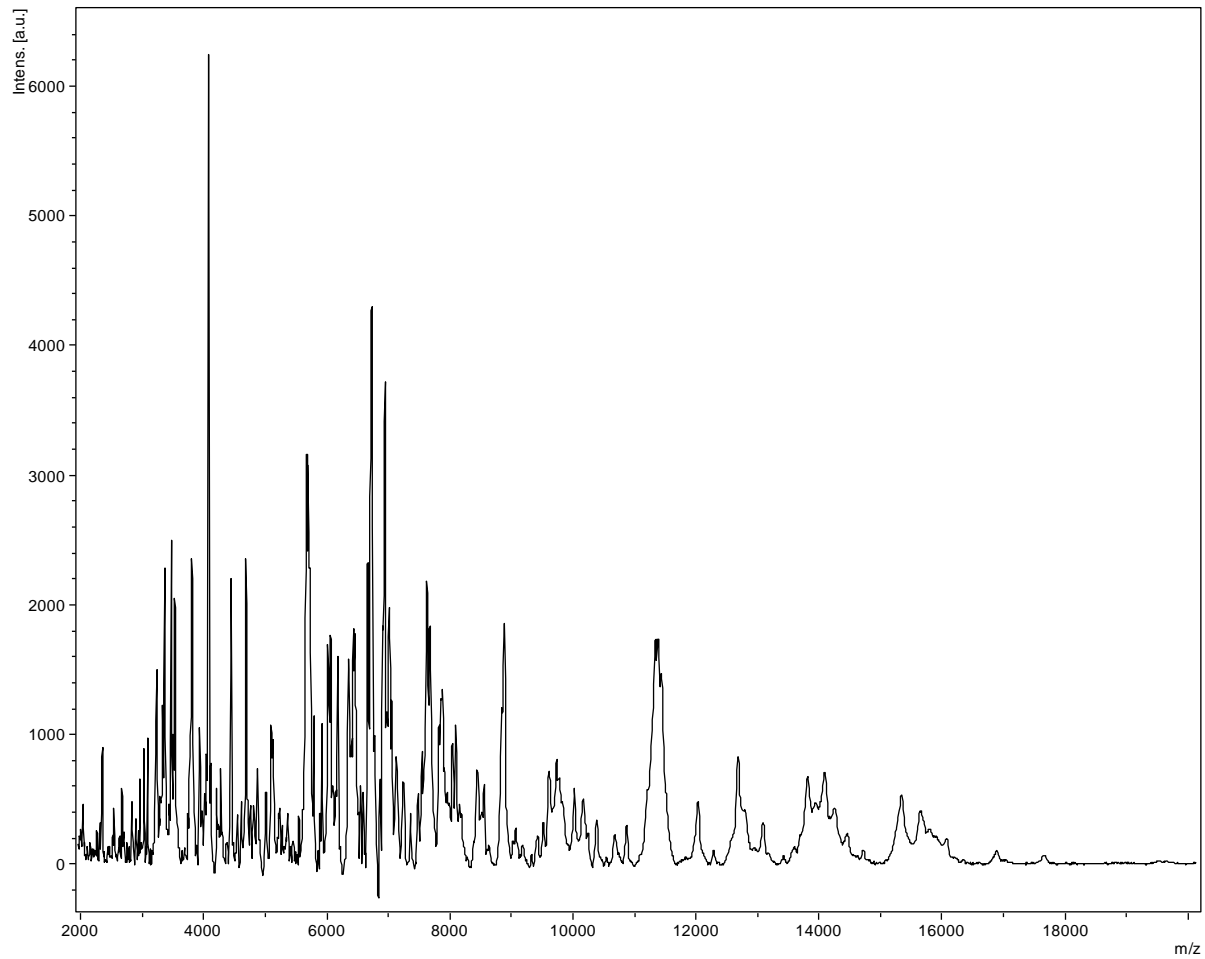
Penicillium crustosum



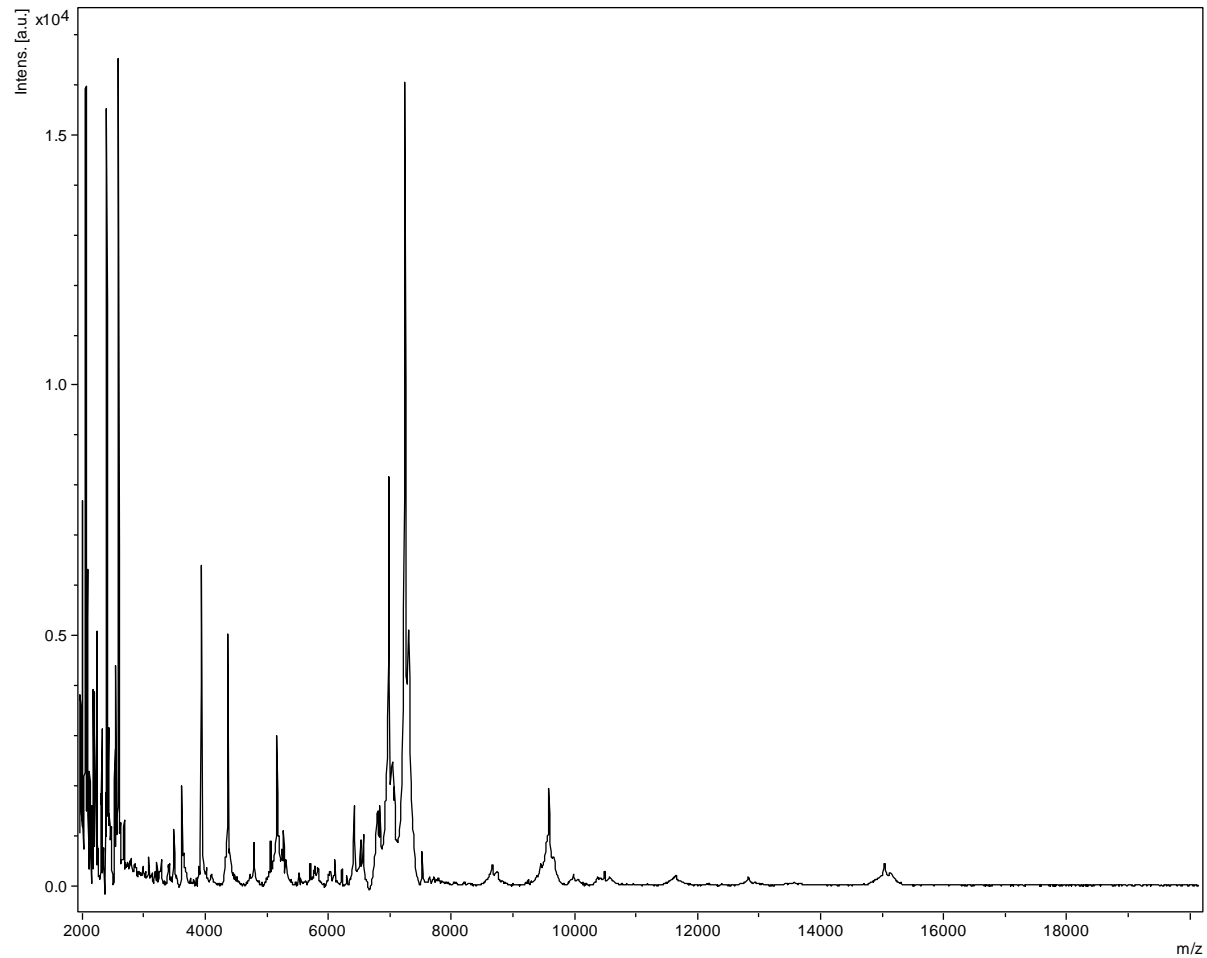
Penicillium rubens



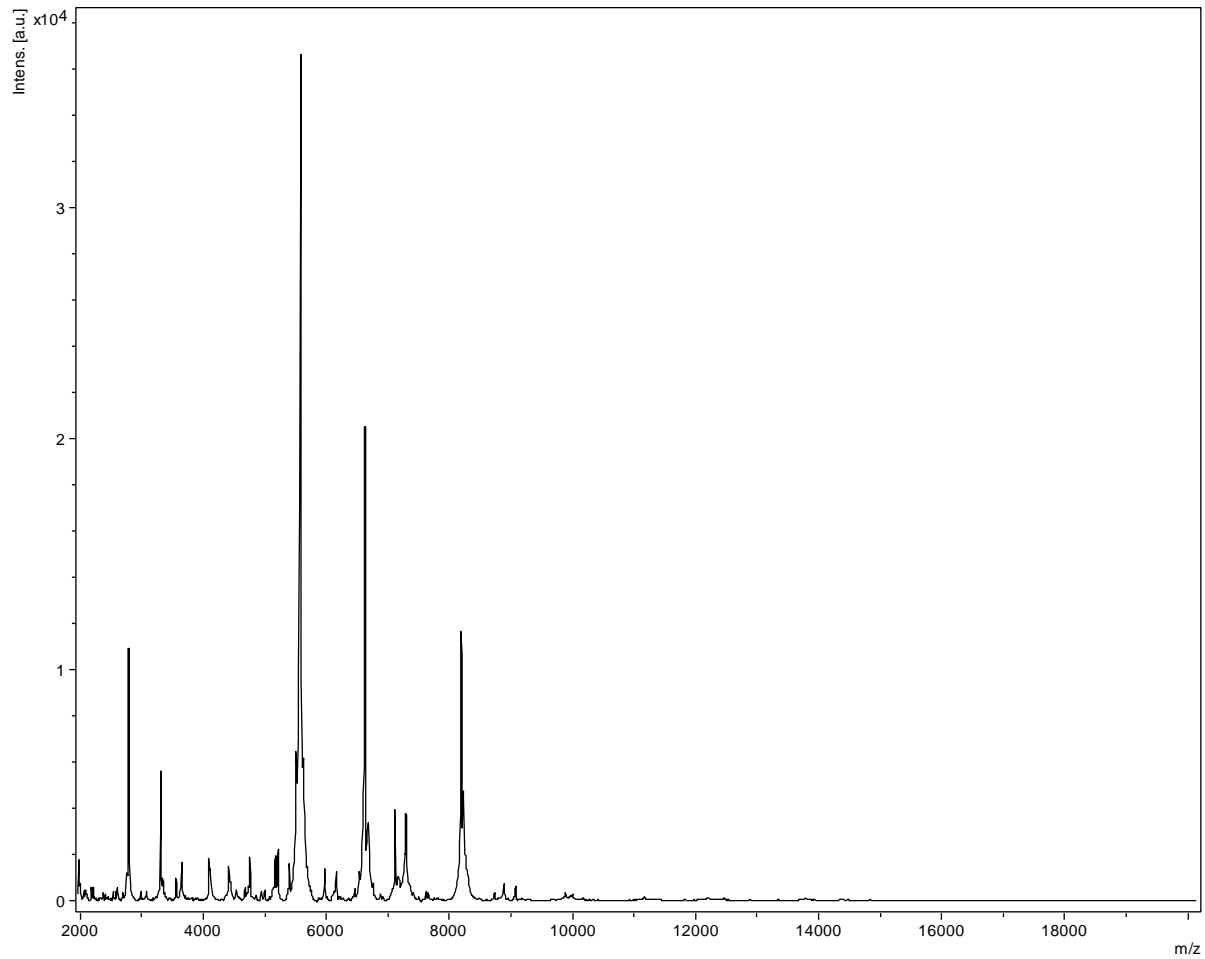
Pichia caribbica



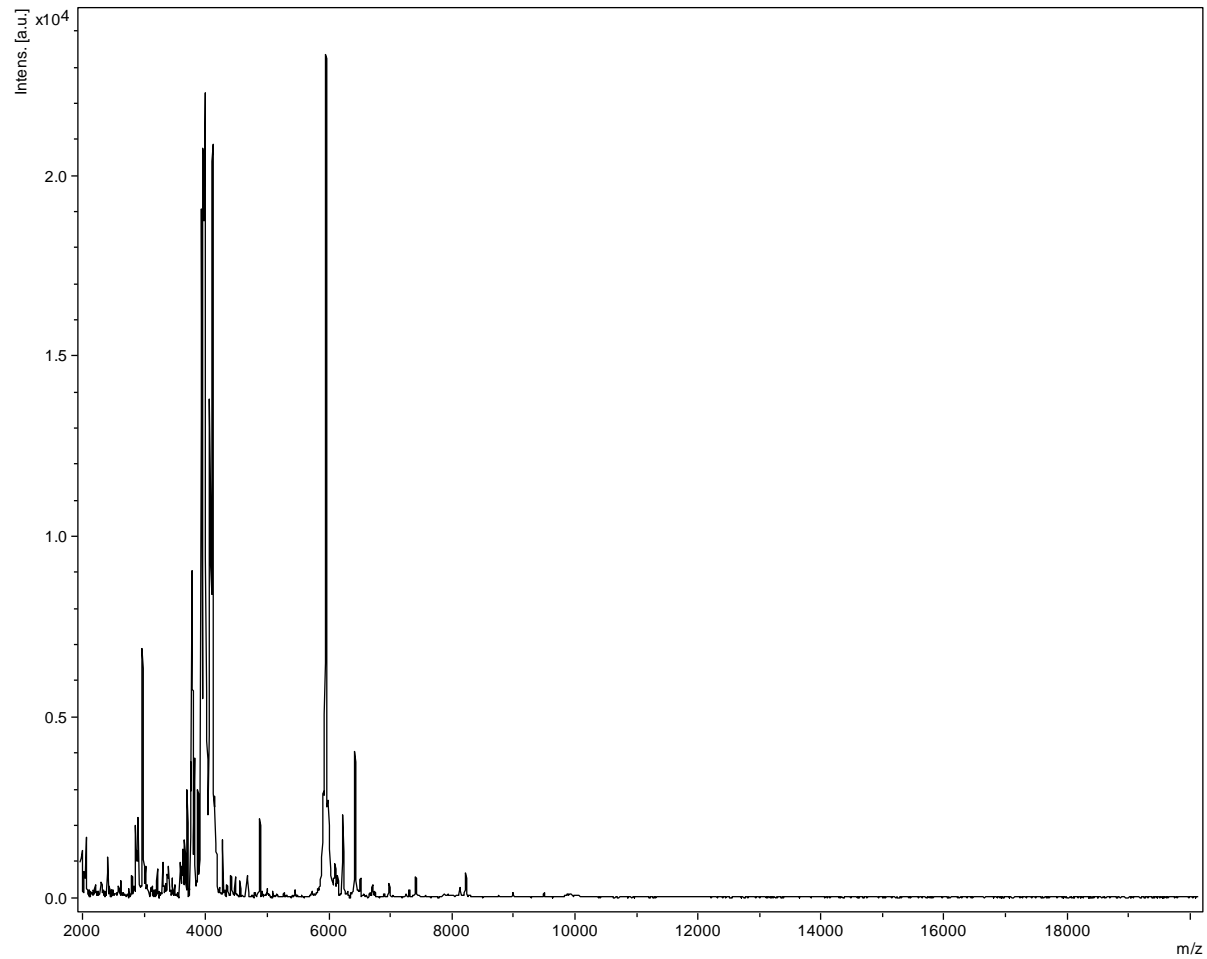
Propionibacterium acnes



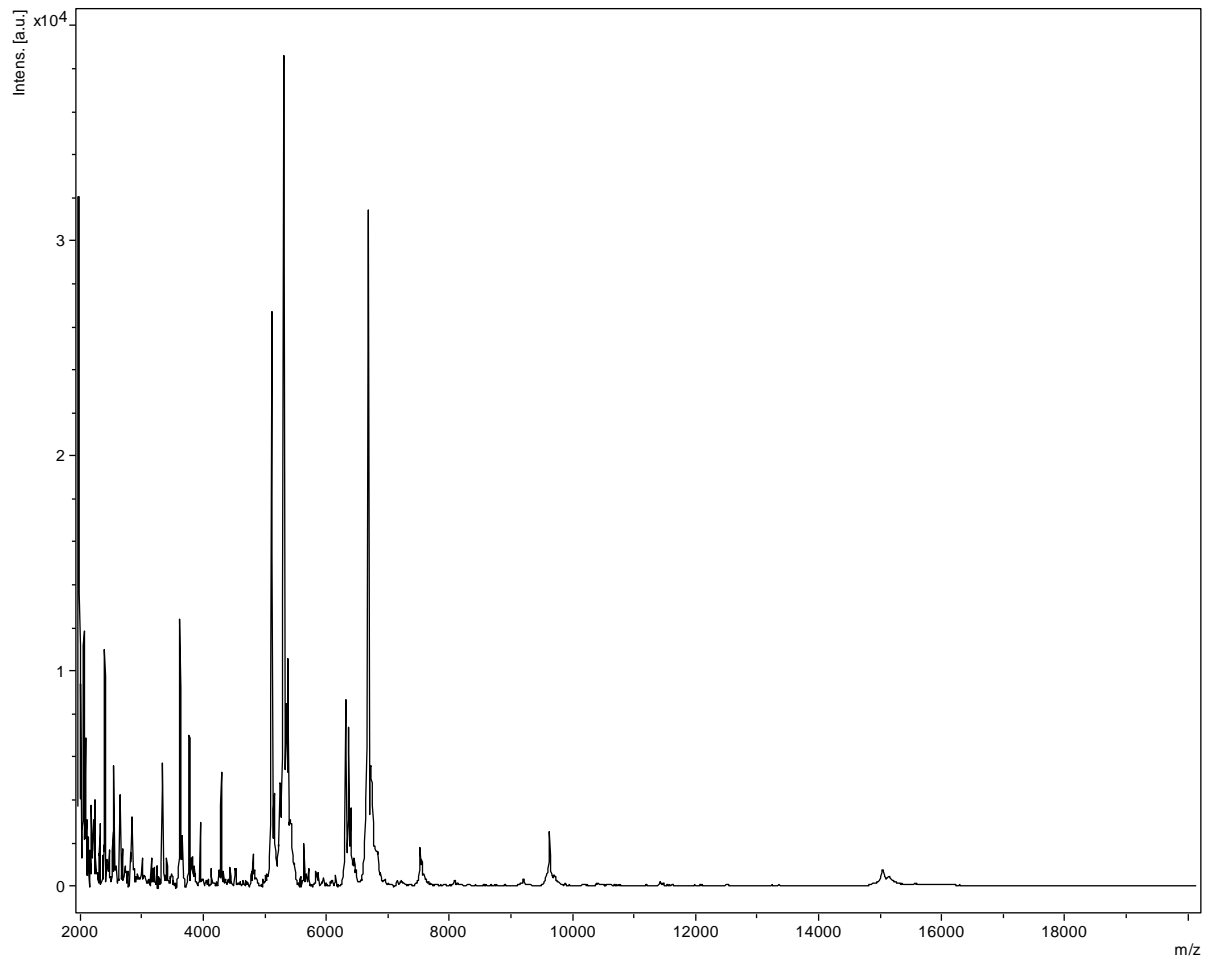
Pseudomonas stutzeri



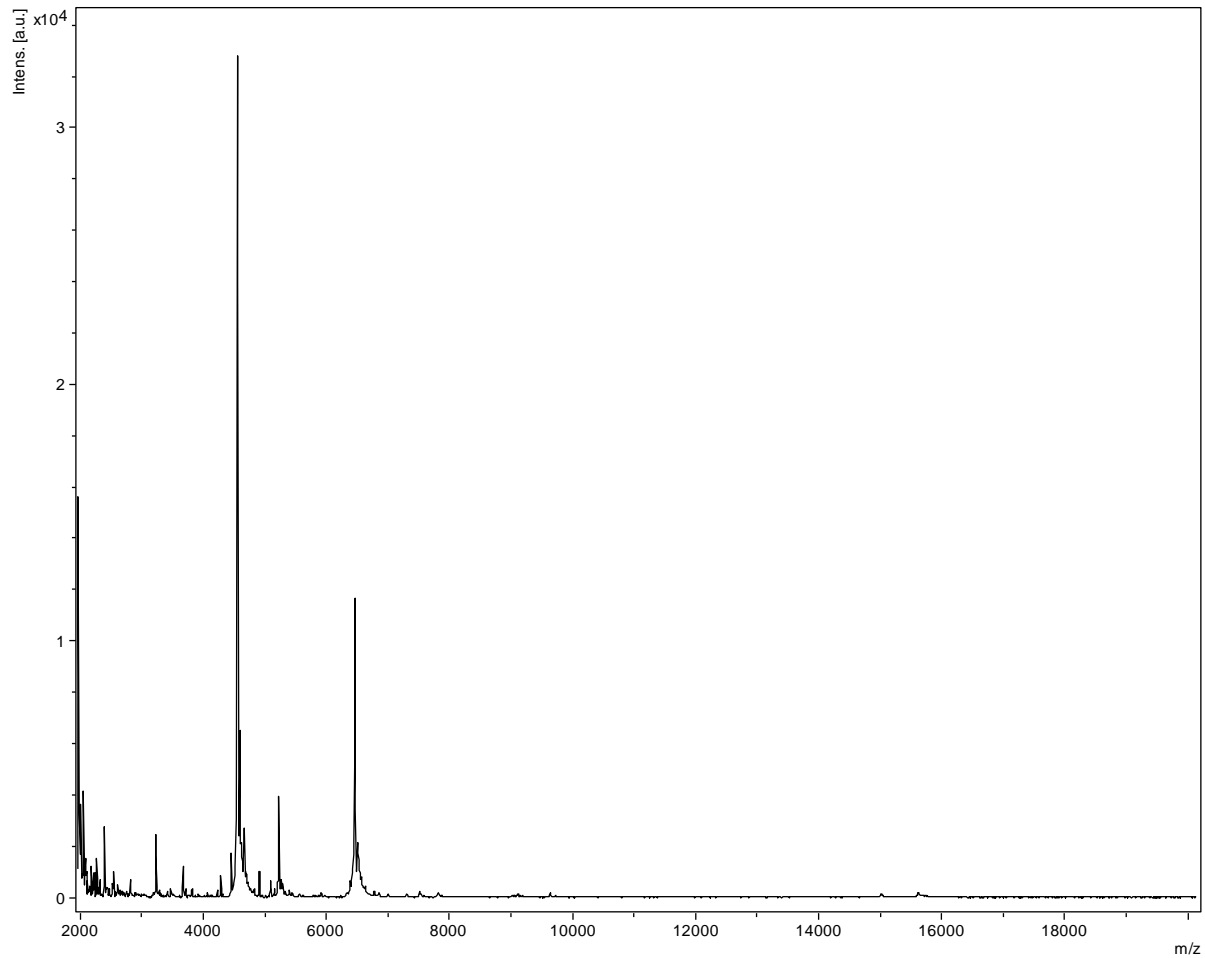
Rhizopus oryzae



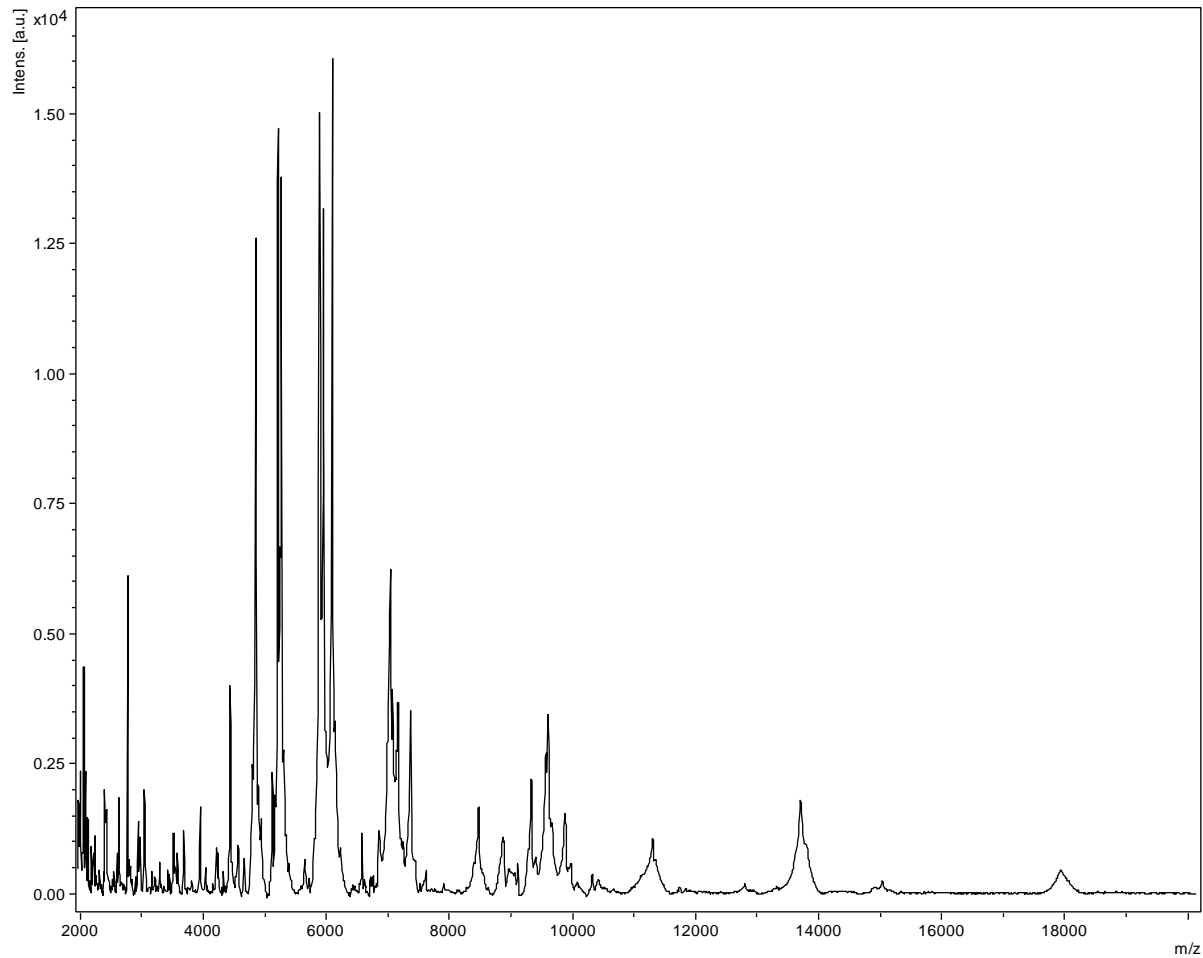
Staphylococcus epidermidis



Staphylococcus hominis



Stenotrophomonas maltophilia



Syncephalastrum racemosum

