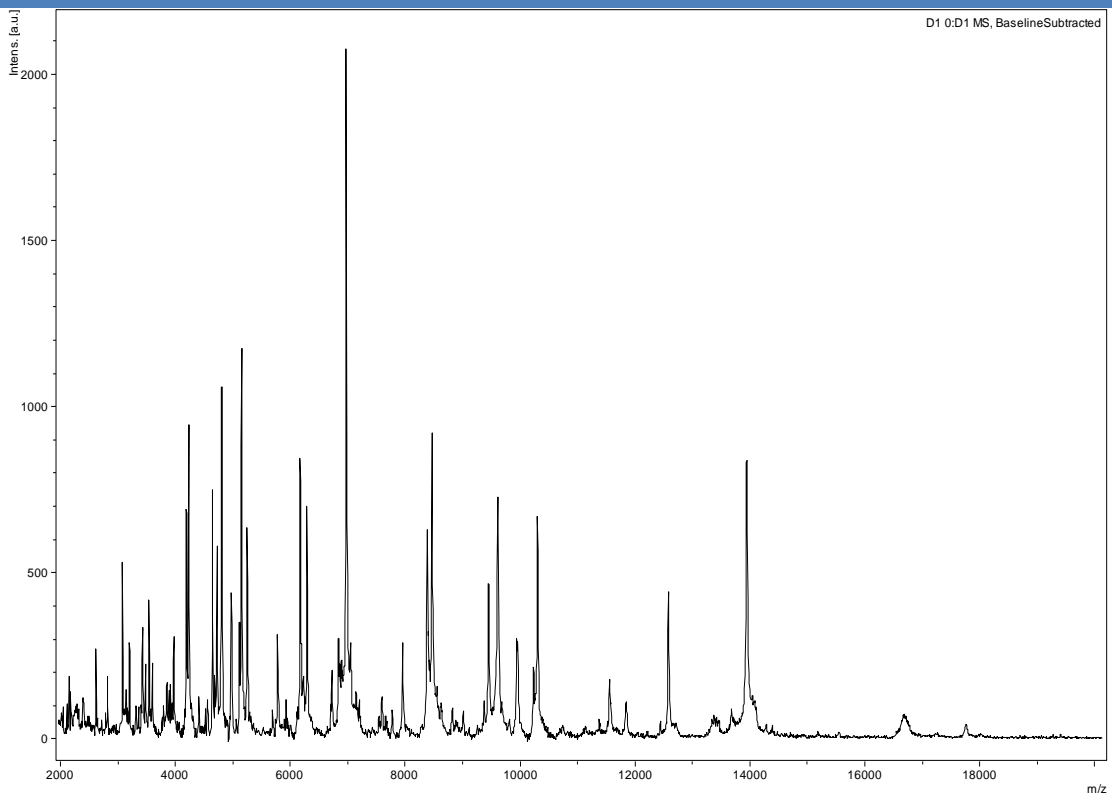
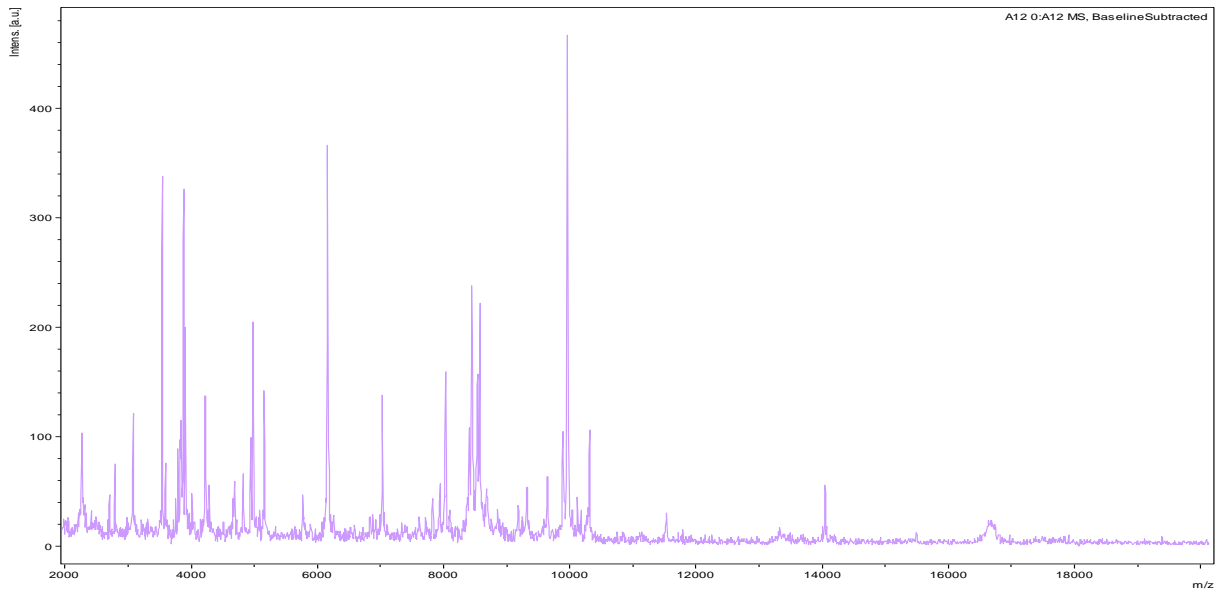


*Borrelia crocidurae* Achema



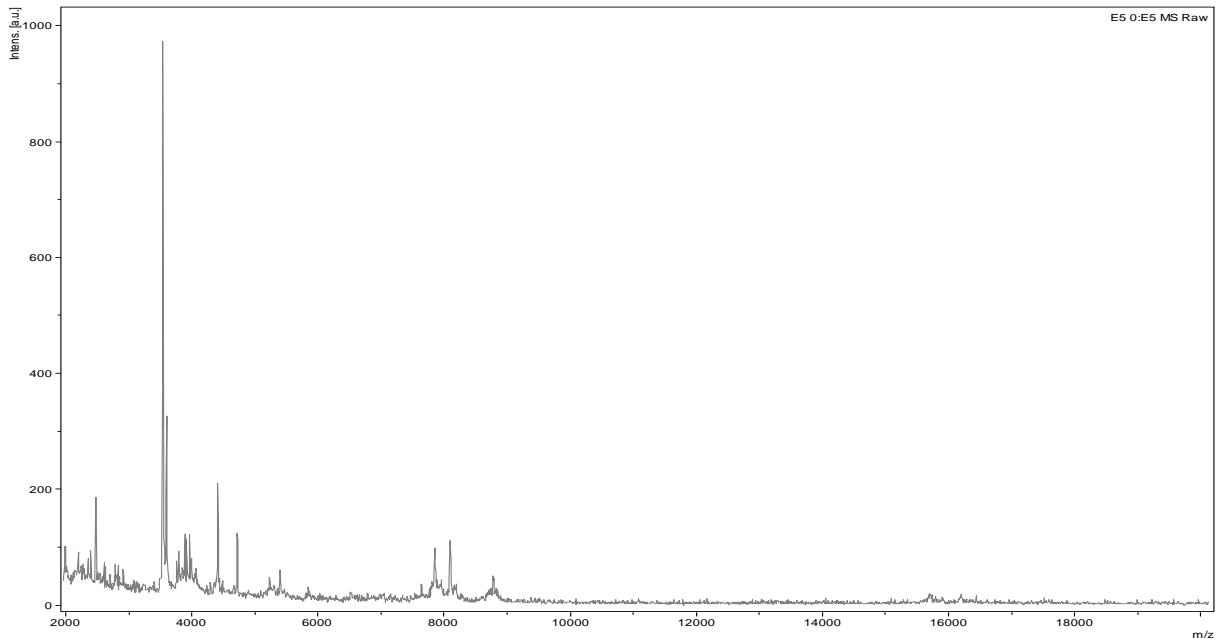
*Borrelia hermsii* BH0147

BH0147



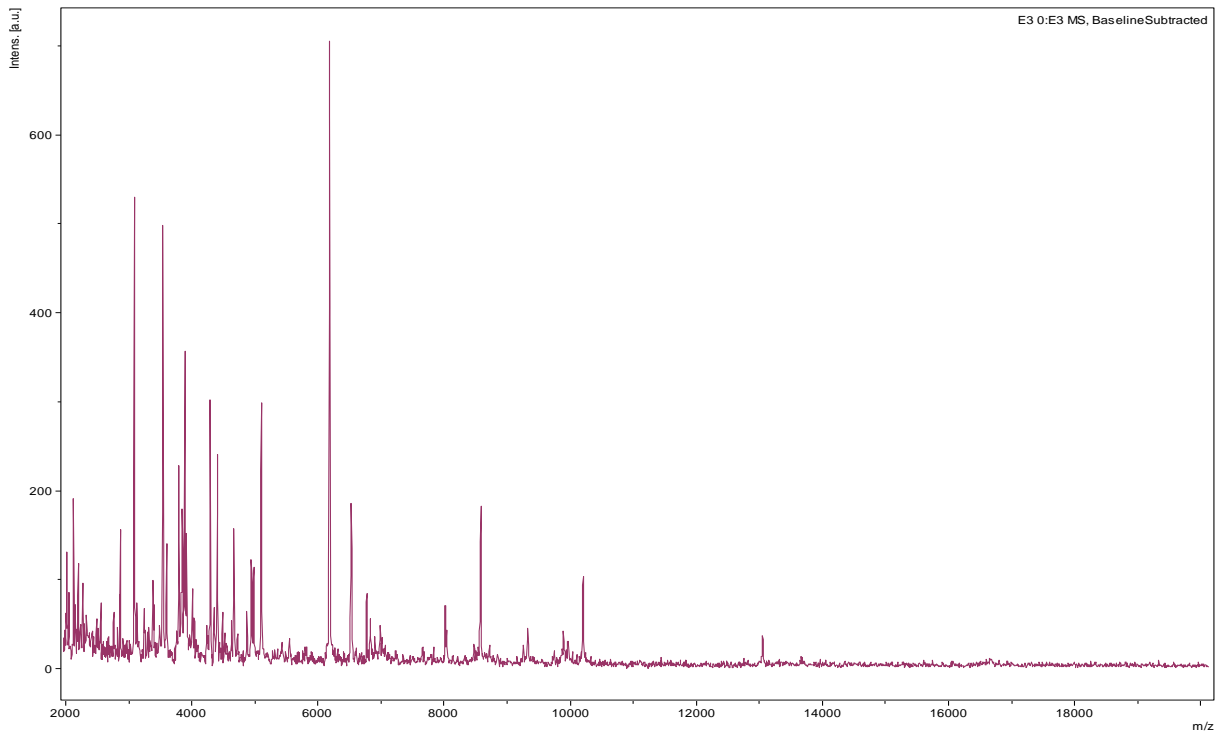
*Borrelia recurrentis* A1

---

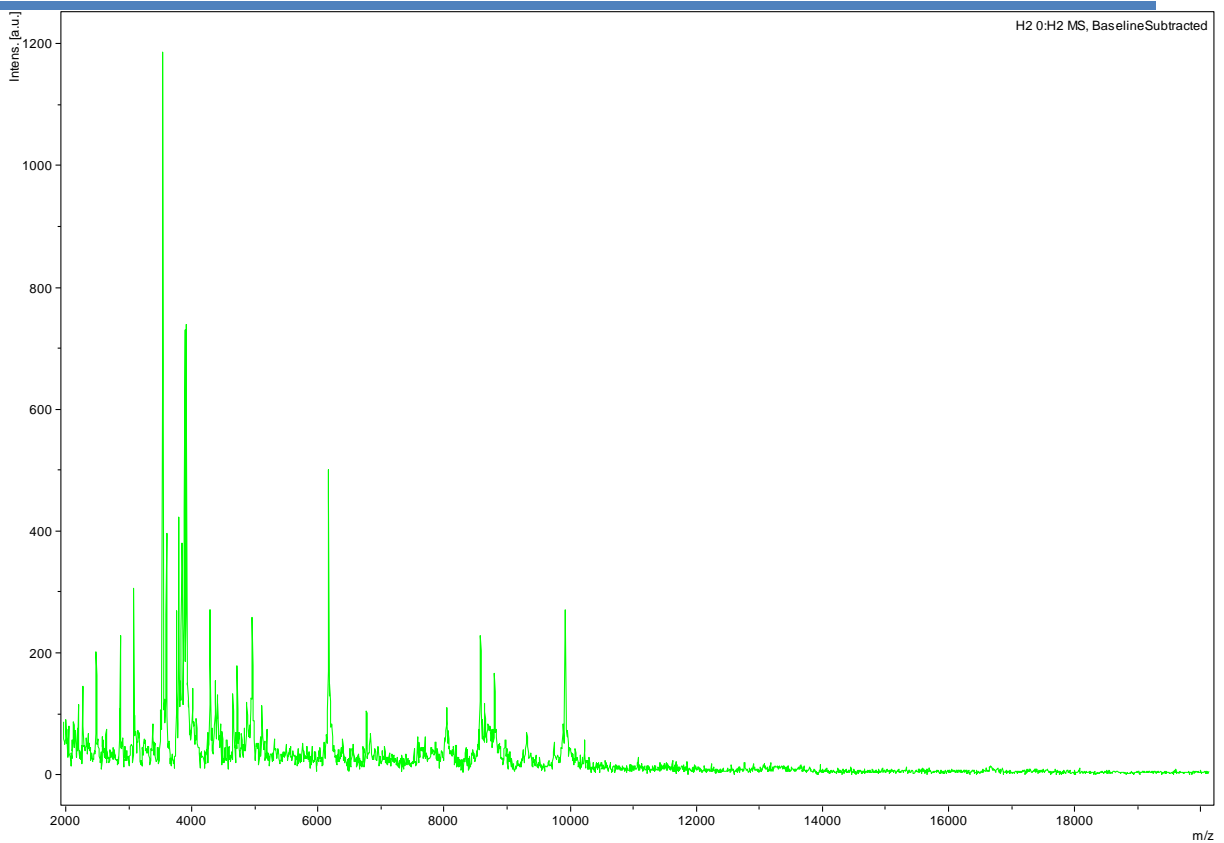


*Borrelia japonica* H014

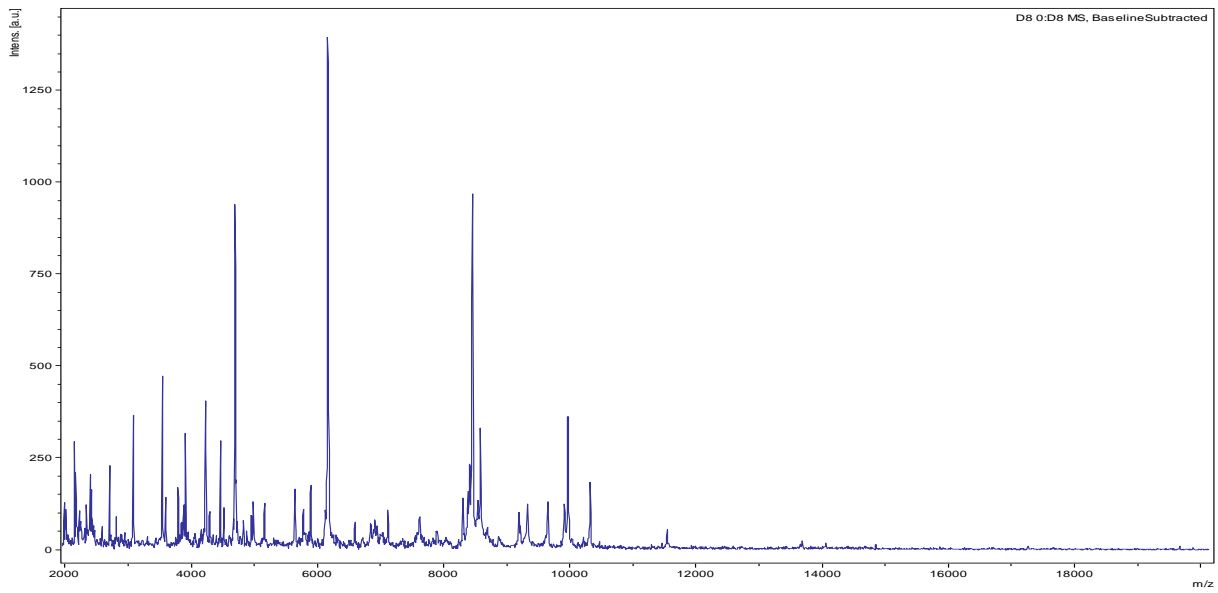
---



*Borrelia andersonii* 19952

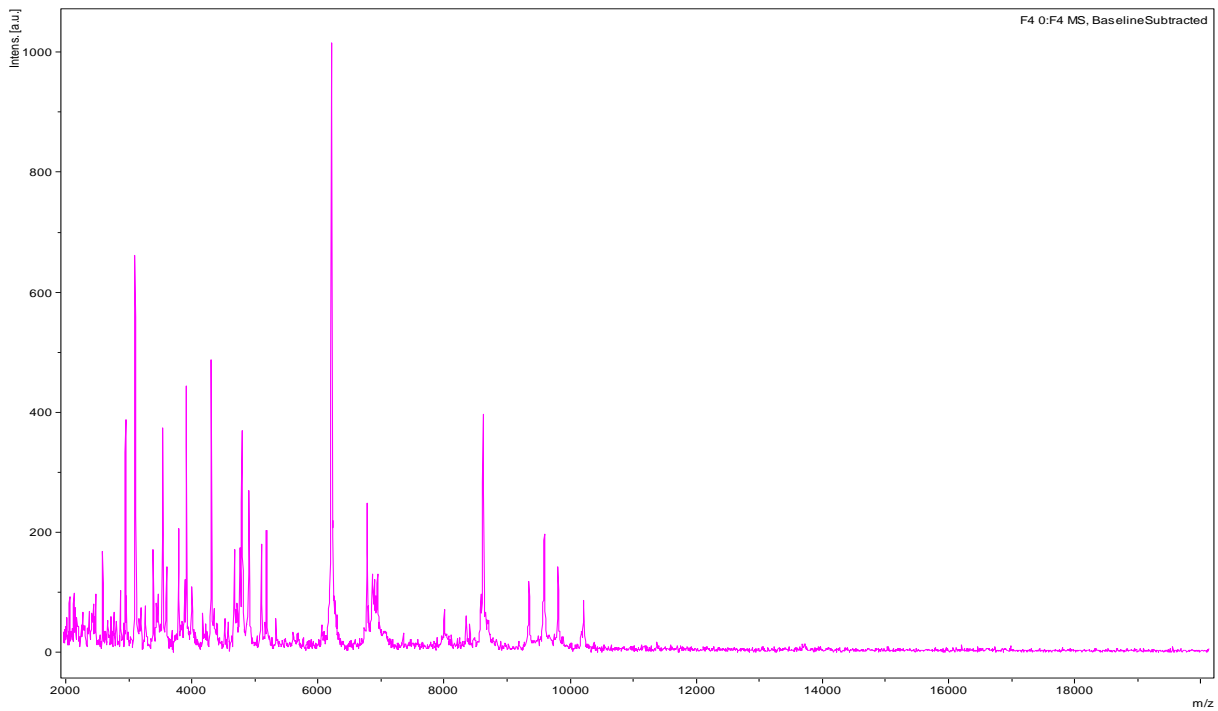


*Borrelia valaisiana* VS116



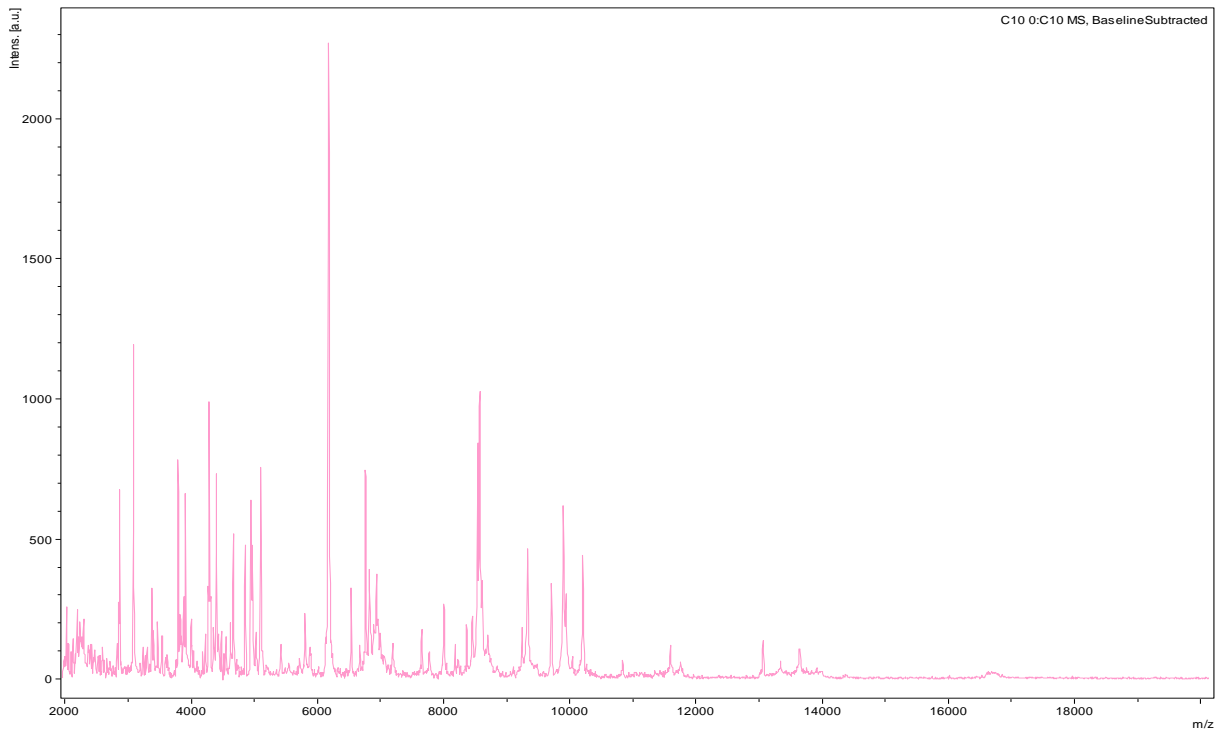
*Borrelia californiensis* CA446

---



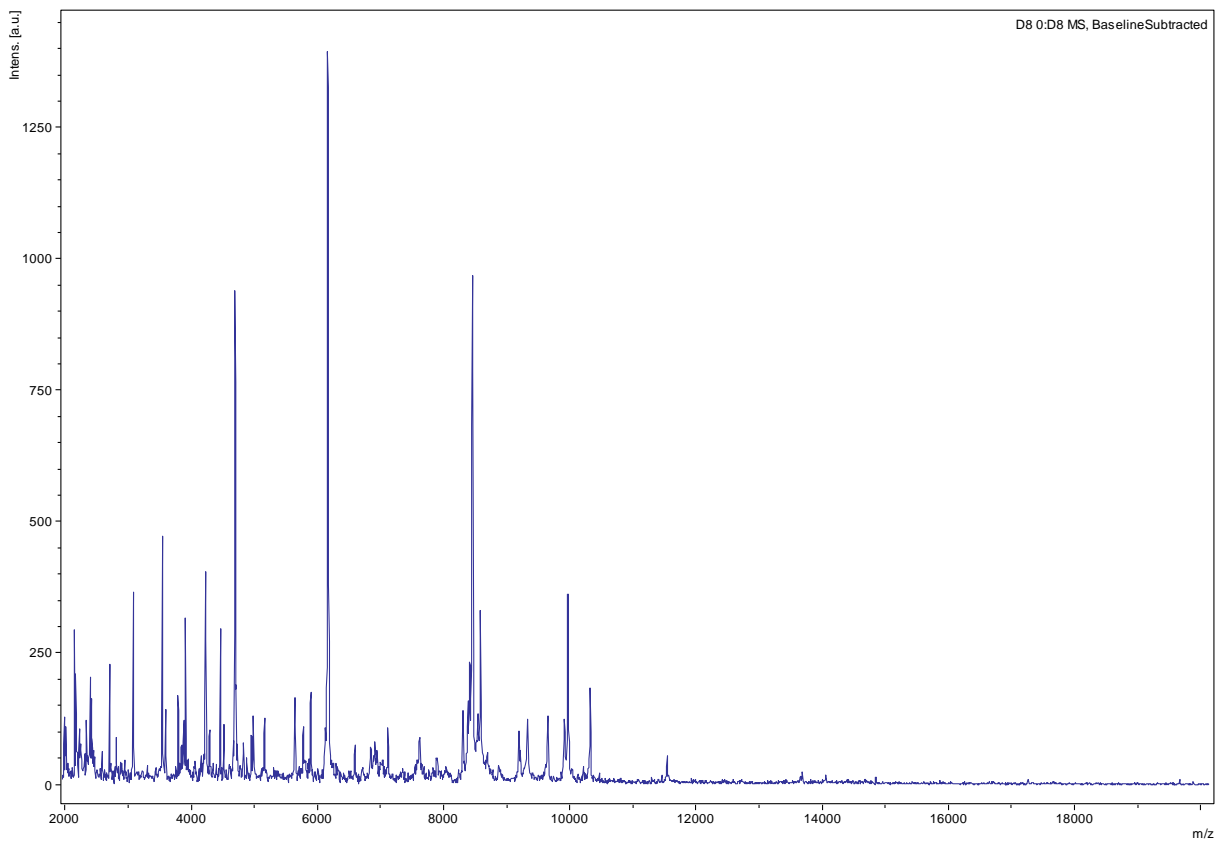
*Borrelia turcica* IST7

---



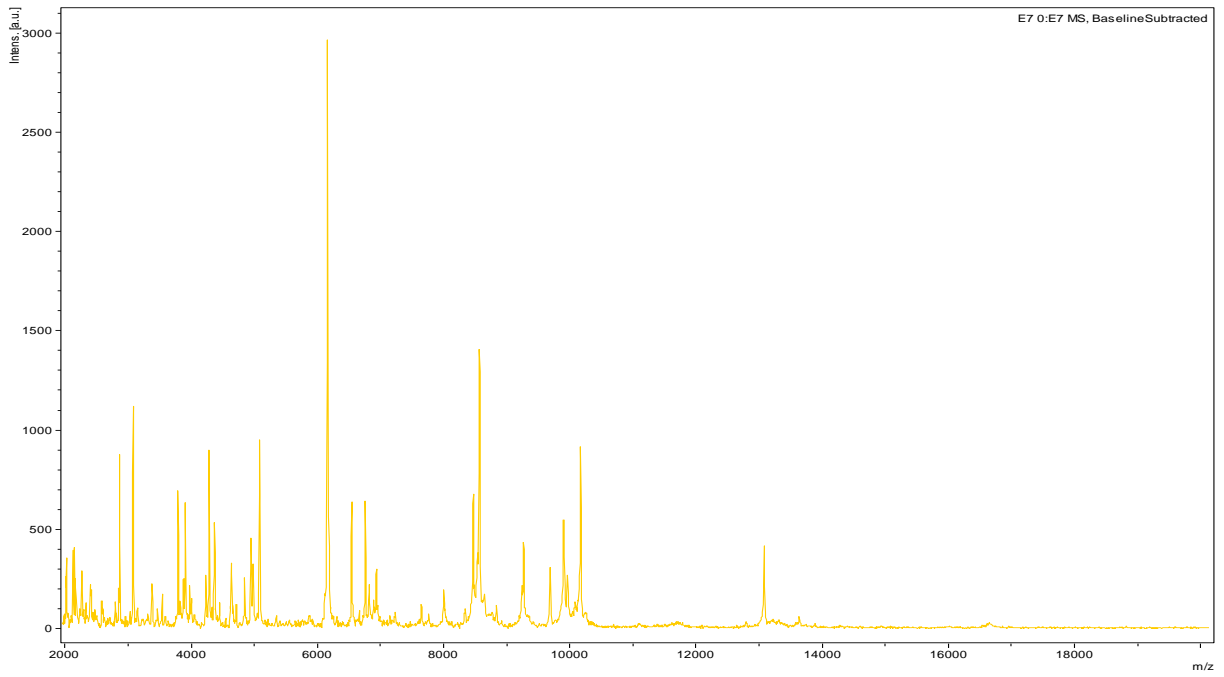
*Borrelia lusitaniae* Poti B2

---



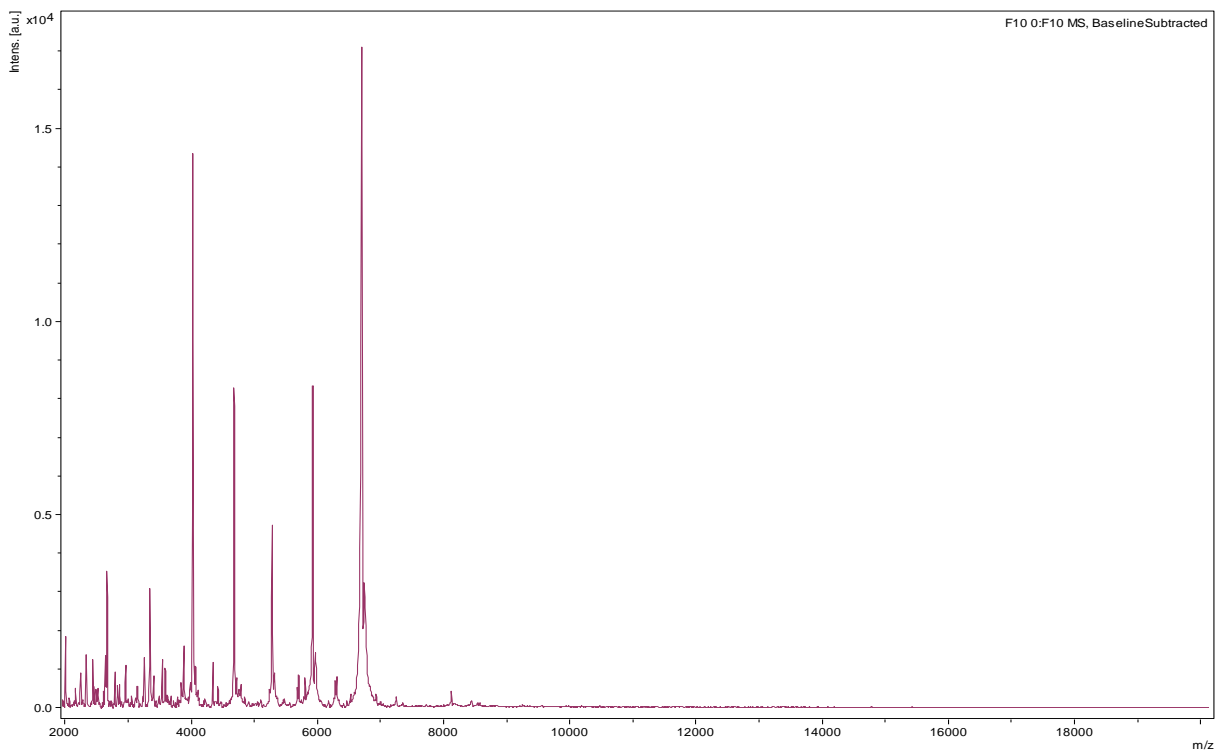
*Borrelia duttonii* Ly

---



*Borrelia garinii* PBi

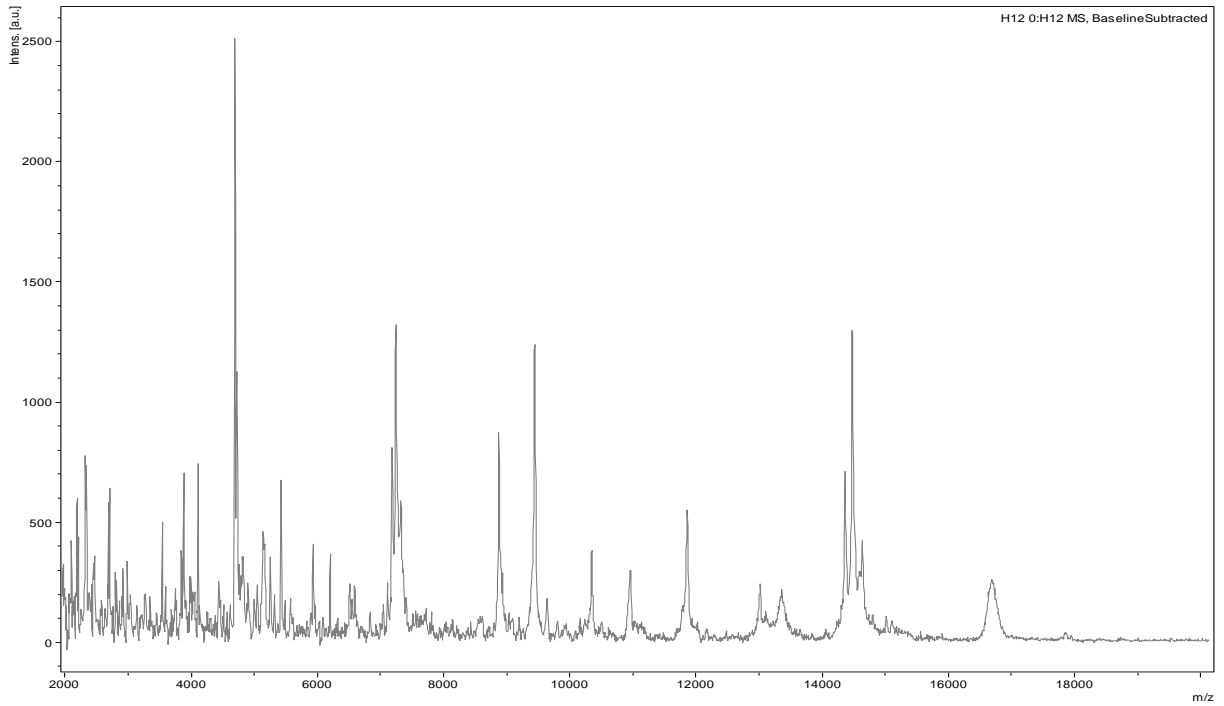
---



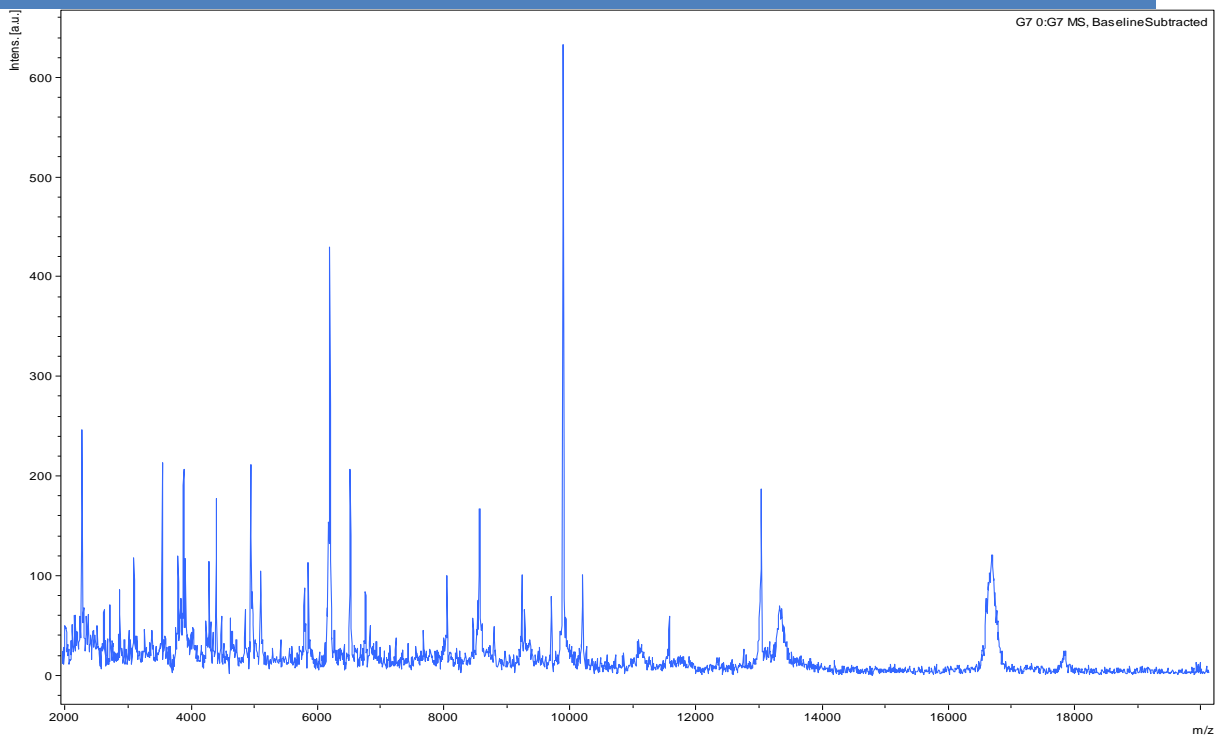
*Borrelia* sp.

CA 28 (“genomospecies 2”)

---



*Borrelia afzelii* PKo



*Borrelia burgdorferi* B31